

2022 SEWER UTILITY BUDGET GOALS

(COLLECTION SYSTEM)

- 1. Have all Collection, Plant Operators, and lab analyst take and pass there DNR certifications by the end of 2023.**
- 2. Foam and additional 10% of our yearly problem root areas that we treat.**
- 3. Stay on pace to decrease I & I (Inflow, infiltration) 10% per budget year through more manhole and mainline rehabilitation projects.**
- 4. Try to increase yearly collection system cleaning and maintenance area by 5 to 10% from 2022. (Would be an additional 10,000 to 15,000 feet.)**
- 5. Audit, update and upgrade our collection system GIS tracking and reporting system by the end of 2023.**

(Plant)

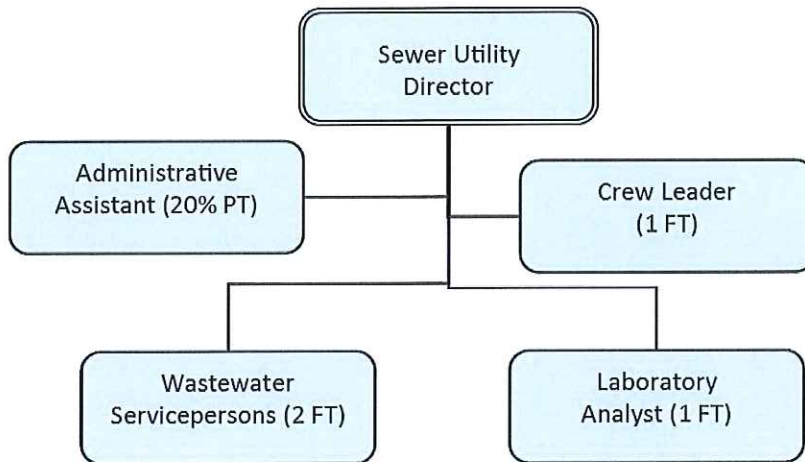
- 1. Complete WPDES permit application and submit before March 1, 2023.**
- 2. Complete the 2023 Capital project, UV Replacement by the end of 2023.**
- 3. Work on identifying additional sources of Chloride contributors and when identified, apply source reduction measures.**
- 4. Start Plant UV Disinfection replacement October 1st and try and have completed by the end of 2023.**

Sewer Utility Trends

1. The Sewer Utility is down from a staff of seven including the Utility Director in 2011, to a staff of five in 2022, that operates and maintains a 3.6 MGD plant and 105 miles of Collection System for the City of Hartford and the Pike Lake and Rubicon Sanitary Districts.
2. Since 2014, the Utility has been able to add \$11,285,321 to its fund balance thru (\$5,384,108 REC fees. restricted funds) and (\$4,101,219 –Revenue’s Sewer Service. Unrestricted funds)
3. Industrial Revenues that are generated thru rates and industrial surcharges have risen 24 percent over the last six years.
4. NR 101 Wastewater fees that the City pays to the DNR for its Effluent discharge has dropped every year from a high in 2012 of \$8000.00 to \$1909.00 in 2022, due to better pollutant removal lowering the lbs discharged of BOD, Sus Solids, Ammonia, and Phos.
5. The Operating Ratio average for the Utility over the last six years (Revenues-divided by- Expenditures) = 1.41
6. The cost for the City to treat one gallon of Wastewater from when it enters the Collection system to its discharge after full treatment into the Rubicon river is .0036 cents/ gal. (Hartford treated 897 million gallons of wastewater in 2021).

7. Sewer flow charge cost comparison/ 1000 gallons for neighboring communities of similar flows and size:

Village of Slinger	- \$9.34/1000 Gal
City of Grafton	- \$8.17/1000 Gal
Cedarburg	- \$8.55/1000 Gal
Oconomowoc	- \$5.94/1000 Gal
Sussex	- \$5.78/1000 Gal
Hartford	- \$4.42/1000 Gal



MISSION:

The primary mission of the Sewer Utility is to protect public health, the environment and the receiving waters of the Rubicon River. The Hartford Sewer Utility provides exceptional wastewater collection, treatment and related services to Hartford and surrounding service areas in a wide and cost-effective manner. The Sewer Utility operates the City of Hartford Water Pollution Control Facility, as well as maintaining a 92 mile underground wastewater collection system. The Water Pollution Control Facility, located in Dodge Industrial Park at the west end of the City, treats an average 4333 gallons of wastewater per household monthly, in conformance with United States Environmental Protection Agency and Wisconsin Department of Natural Resources regulations. Customers are charged based upon water consumption and water meter size, with surcharges assessed for extra loadings and extraterritorial service. The current facility discharges treated water into the Rubicon River at the western edge of the City. A new \$19.3 million facility with a 20 year anticipated life was completed in 1999.

- Treat over one billion gallons of Hartford wastewater to safe environmental standards as prescribed by the Wisconsin Department of Natural Resources and the Environmental Protection Agency.
- Keep the laboratory quality assurance and registration as directed by NR 149.
- Provide interim financing to Water Utility.
- Closely monitor new permit requirements.

GENERAL GOVERNMENT ~ Wastewater

2023 Department Detail Information

WASTEWATER TREATMENT FUND ~ Revenue

	2020 Actual	2021 Actual	2022 Budget	2023
464100.42201 Sewer Tap	\$ 55	\$ 330	\$ 55	\$ 100
464100.46411 Residential Sales	\$ 2,033,863	\$ 2,057,437	\$ 2,015,000	\$ 2,125,000
464100.46412 Commercial Sales	\$ 244,737	\$ 263,919	\$ 260,000	\$ 275,000
464100.46413 Industrial Sales	\$ 700,372	\$ 727,241	\$ 750,000	\$ 750,000
46416 Extra Territorial Charges	\$ 400,976	\$ 377,973	\$ 350,000	\$ 375,000
464100.46436 Multi-Family Sales	\$ 229,068	\$ 230,615	\$ 225,000	\$ 230,500
464100.46426 Reserve Capacity Charge	\$ 389,686	\$ 793,423	\$ 250,000	\$ 300,000
464100.46450 Forfeited Discounts	\$ 2,389	\$ 4,499	\$ 3,000	\$ 3,000
464100.47141 Sales To Public Authoritie	\$ 112,149	\$ 141,076	\$ 121,000	\$ 125,000
464100.48110 Interest On Investments	\$ 78,168	\$ 2,049	\$ 20,000	\$ 10,000
492100.48890 Other Misc. Revenue	\$ 7,024	\$ 71,840	\$ -	\$ -
492000.49379 Debt Retirement Sinking	\$ 367,654	\$ 626,158	\$ 176,869	\$ 115,845
492000.49480 TIF #10	\$ -	\$ -	\$ 141,156	\$ 120,156
492000.49531 Electric Utility Fund	\$ -	\$ -	\$ -	\$ -
492000.49532 Water Utility Fund	\$ -	\$ -	\$ -	\$ -
492000.49997 Fund Balance Appropriated	\$ -	\$ -	\$ (746,109)	\$ (830,580)
TOTAL	\$ 4,566,141	\$ 5,296,560	\$ 3,565,971	\$ 3,599,021

GENERAL GOVERNMENT ~ Wastewater

2023 Department Detail Information

WASTEWATER TREATMENT FUND ~ Summary

	2021 Actual	2022 Budget	2023	Gen. Fund	Water	Sewer
Labor - Administration	\$ 265,815	\$ 282,807	\$ 282,111	-	-	282,111
Operations And Maintenance	\$ 723,567	\$ 720,436	\$ 725,305	-	-	725,305
Debt Service Payments	\$ -	\$ -	\$ -	-	-	-
Capital Outlays	\$ -	\$ -	\$ -	-	-	-
Transfers To Other Funds	\$ 8,640	\$ 1,000	\$ 1,000	-	-	1,000
Labor - Collection	\$ 290,994	\$ 319,867	\$ 295,119	-	-	295,119
Operations And Maintenance	\$ 366,197	\$ 418,494	\$ 427,494	-	-	427,494
Labor - Treatment	\$ 284,941	\$ 363,359	\$ 288,512	-	-	288,512
Operations And Maintenance	\$ 242,972	\$ 304,600	\$ 320,100	-	-	320,100
General & Admin. Expenses	\$ 925,641	\$ 1,053,445	\$ 1,153,658	-	-	1,153,658
Labor - Shared Water Meter	\$ 37,808	\$ 32,963	\$ 36,722	-	-	36,722
Operations And Maintenance	\$ 60,728	\$ 69,000	\$ 69,000	-	-	69,000
Harrison Street Sanitary Sewer	\$ -	\$ -	\$ -	-	-	-
South Main Street Sanitary Sewer	\$ -	\$ -	\$ -	-	-	-
Water Meter Replacement Program	\$ -	\$ -	\$ -	-	-	-
HADC Industrial Park Land	\$ -	\$ -	\$ -	-	-	-
Plant Maintenance Vehicle	\$ -	\$ -	\$ -	-	-	-
Plant Ultra Violet Disinfection	\$ -	\$ -	\$ -	-	-	-
Grand Total	\$ 3,207,303	\$ 3,565,971	\$ 3,599,021	\$ -	\$ -	\$ 3,599,021
Total Sal/FB	\$ 879,558	\$ 998,996	\$ 902,464	\$ -	\$ -	\$ 902,464
Total Other Exp	\$ 2,327,745	\$ 2,566,975	\$ 2,696,557	\$ -	\$ -	\$ 2,696,557
Grand Total	\$ 3,207,303	\$ 3,565,971	\$ 3,599,021	\$ -	\$ -	\$ 3,599,021