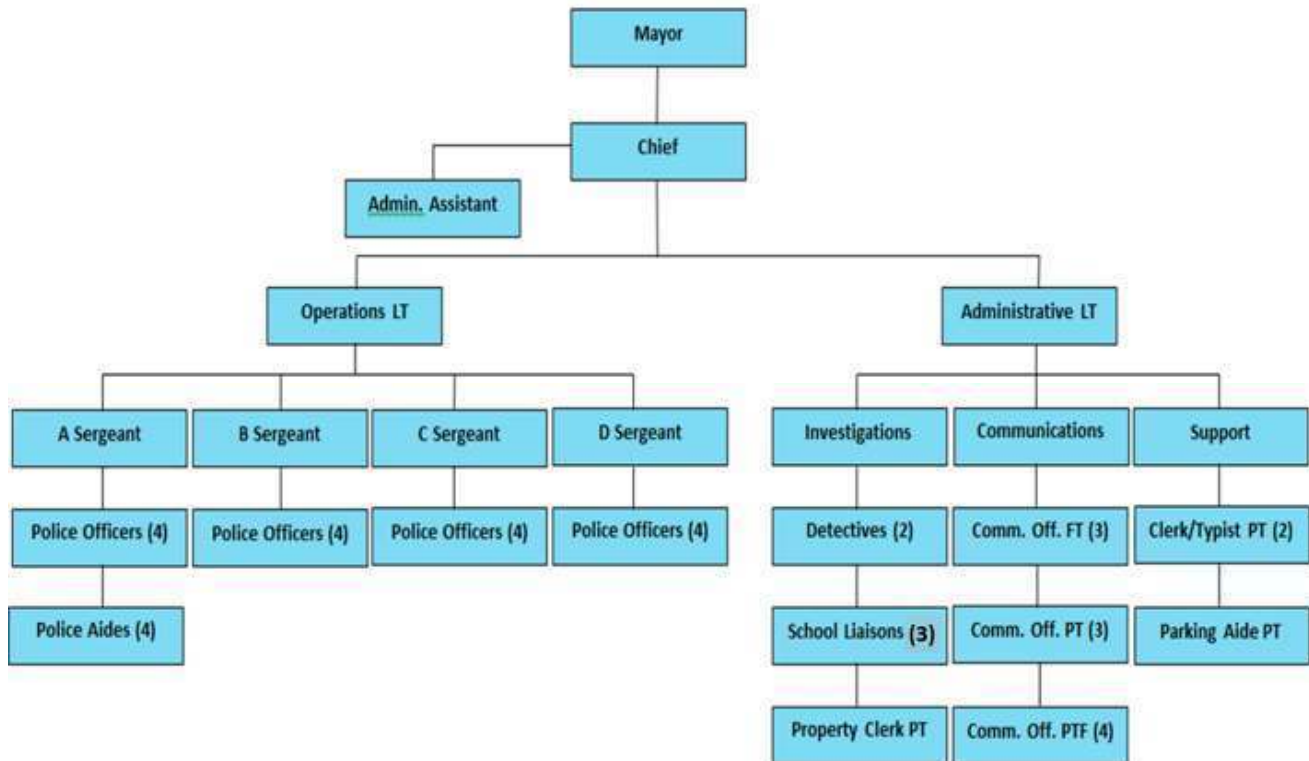


GENERAL GOVERNMENT ~ Police



MISSION:

Community based Law Enforcement is provided to the citizens of Hartford through the Hartford Police Department. This division of the Department of Public Safety provides 24 hour response to community needs with a motorized fleet of five marked patrol vehicles, three unmarked vehicles, and a marked four-wheel drive SUV used by the Police K-9 Unit. A nationally certified Emergency Communications Center with radio and paging communication system operates from police offices in City Hall 24 hours a day, including a state of the art emergency 911 Public Safety Answering Point. The department was formed in 1922, and Emergency Communications Services have been performed locally since 1967. The division is responsible for law enforcement service calls, criminal and non-criminal investigations, case preparation for prosecutions, traffic enforcement, crime prevention, community relations programs, and the direct enforcement of federal, state, and municipal laws.

- Provide proactive police response through community involvement.
- Provide positive community interaction through outreach and collaborative efforts through educational programs and presentations.
- Control and maintain the atmosphere of a safe environment of the community based on the perception of its citizens.

Hartford Police Department
10 Things Our Elected Officials Should Know

1. **Who is HPD?** We are a professional department, dedicated to providing the highest quality police service to the citizens we serve. **It is the mission of the Hartford Police Department to enhance the quality of life through community-based policing that provides police services in a fair, conscientious and professional manner.** To help accomplish our mission, the Department is committed to values that guide our daily work and decisions: **Sensitivity, Honesty, Openness and Accessibility, Accountability and Efficiency, and Ethics.** HPD is **“COMMUNITY PROUD!”**

2. **Quick Facts about HPD’s Patrol Division**
 - 4 sergeants and 16 police officers are assigned to the Patrol Division
 - HPD has 1.8 sworn officers per 1,000 residents
 - HPD has 10 squads, 5 marked squads, 1 K-9 squad, 4 special purpose squads

3. **Quick facts about HPD’s Investigations Bureau**
 - HPD has 2 full-time detectives and 1 officer assigned part-time to the Investigations Bureau
 - HPD detectives are specially trained to handle a variety of criminal investigations
 - Multiple officers are trained Evidence Technicians to assist in criminal investigations

4. **Quick Facts about HPD’s Emergency Communications Center (ECC)**
 - Served Hartford 24/7/365 since 1967
 - Handles calls for Police, Fire, and Emergency Medical Services
 - First Washington County agency to be APCO Emergency Medical Dispatch Certified in 2011
 - First Wisconsin ECC to be recognized as nationally certified by APCO.

5. **Never Guess, ASK!** No one expects you to know everything. We are here to provide you with any information you may need. It generally takes less time to get you correct information than it does to try and *“put the genie back in the bottle”* if an error has been made.

6. **“Who ya gonna call?”** Pre-Program the Police Department’s non-emergency line (262)673-2600 into your phones. The majority of the issues you are asked about involving police matters can and should be dealt with by calling our Emergency Communications Center’s non-emergency number. 911 should ONLY be used for emergencies.

7. **What’s Going on?** If you are questioned regarding a police investigation, refer them directly to the police department website or our Facebook page. *The police department is the only official source for information regarding police matters.* Because we need to be as accurate as possible with the information we release, it may take a little longer. Be patient! When in doubt, there is absolutely nothing wrong with telling a citizen *“I don’t have that for you,”* and referring them directly to the police department.

8. **Life in the “Fish Bowl”.** Much like police officers, elected officials are often held to a higher standard in the public’s eyes. Make yourself aware of local ordinances that may affect you and

be sure to follow them. Winter parking restrictions, outdoor burning, and yard waste disposal are just a few examples of common issues you can simply avoid through personal compliance.

9. ***How can I help?*** As an elected official, you may be asked to intervene on behalf of a citizen who has had enforcement actions taken against them by the police department. We want you to feel free to ask us for information regarding these issues, and we will share what we can when it does not jeopardize an ongoing investigation, prosecution, or other official duty of the department. It is important to understand that enforcement decisions are made at the discretion of professional police officers, who are in possession of all of the facts at the time of an incident, in compliance with local, state, and federal laws. If the person would like to file a complaint regarding a matter, refer them to the department via the department's existing complaint procedures. The matter will be investigated and corrective actions will be taken, if necessary. In the cases of wrongdoing, the matter will be handled through the department's disciplinary process, ultimately subject to the Police and Fire Commission.

10. ***How can I learn more?*** Every fall the police department hosts a Citizens Police Academy. It meets one night a week for 10 weeks and covers a variety of policing functions. It is very informative, has many one-of-a-kind learning opportunities for attendees, it is FREE, and it is FUN! Every year we invite local and area elected officials to join us for this program. The majority of your peers have attended this course. We also are available for tours, ride alongs, or chances to sit in and observe the daily operations of our Emergency Communications Center. Contact us at the non-emergency number to ask about these opportunities to learn about our department.

GENERAL GOVERNMENT ~ Police

2020 Department Detail Information

POLICE ~ Revenue

	2017 Actual	2018 Actual	2019 Budget	2020
432000.43610 Municipal Services-State Aid	\$ 1,903	\$ 1,868	\$ 1,900	\$ 1,900
435200.43271 Federal Grants	\$ 9,199	\$ 2,719	\$ -	\$ 1,500
435200.43520 State Aid- Training	\$ 3,200	\$ 3,840	\$ 4,480	\$ 4,480
435330.43531 Local Transportation Aid	\$ 144,869	\$ 145,735	\$ 150,794	\$ 163,057
435330.43533 State Aid/Connecting St.	\$ 26,508	\$ 36,654	\$ 26,635	\$ 26,569
440000.44240 Parking Permits	\$ 872	\$ 1,507	\$ 1,000	\$ 1,000
449100.44210 Bicycle Licenses	\$ 264	\$ 284	\$ 250	\$ 275
450000.45193 Vehicle Impound Fees	\$ 240	\$ 462	\$ 450	\$ 450
450000.45216 Other Asset Forfeitures	\$ 2,120	\$ 245	\$ -	\$ -
450000.45223 Court Penalties & Fines	\$ 122,521	\$ 139,989	\$ 129,500	\$ 126,400
451300.45120 Parking Violations	\$ 48,662	\$ 52,772	\$ 48,500	\$ 48,500
451900.45191 False Alarm Fines	\$ 4,300	\$ 4,500	\$ 3,750	\$ 4,000
460000.46192 Photocopy Revenue	\$ 2,307	\$ 3,739	\$ 2,350	\$ 2,500
460000.46193 Finger Printing	\$ 520	\$ 485	\$ 550	\$ 550
460000.46194 Preliminary Breath Test	\$ 345	\$ 780	\$ -	\$ -
460000.46201 Towing Fees	\$ 1,789	\$ 638	\$ 1,400	\$ 1,000
462100.45190 Alarm Permit Fees	\$ 2,955	\$ 3,045	\$ 3,000	\$ 3,045
462100.46210 Police Services	\$ 6,089	\$ 136,231	\$ 286,000	\$ 268,000
462100.46230 Warrant Service Fee	\$ 5,070	\$ 540	\$ 5,300	\$ -
462100.46240 Board of Prisoners	\$ (1,003)	\$ 1,640	\$ 150	\$ -
480100.48330 Materials Sales	\$ 394	\$ 1,148	\$ 100	\$ 100
483000.48310 Gain Or Loss On Disposal	\$ 22,680	\$ 28,101	\$ 20,000	\$ -
483000.48333 Abandoned Vehicle Sales	\$ -	\$ 1,263	\$ 1,000	\$ 1,000
483000.48890 Other Misc. Revenues	\$ 175	\$ (55)	\$ 100	\$ 100
485100.48511 DARE Program Donations	\$ -	\$ 967	\$ 100	\$ 100
485100.48512 Explorer Program Donations	\$ 2,019	\$ 791	\$ 100	\$ 100
485100.48513 Community Outreach Donation	\$ 5,774	\$ 7,511	\$ 100	\$ 100
485100.48515 Police K-9 Program	\$ 49,811	\$ 3,780	\$ 100	\$ 100
485100.48516 Mini Academy	\$ 10,969	\$ 10,991	\$ 100	\$ 100
493100.49997 Fund Balance Appropriated	\$ -	\$ -	\$ -	\$ -
TOTAL	\$ 474,552	\$ 592,170	\$ 687,709	\$ 654,926

2020 Department Detail Information

POLICE ~ Summary

	2018 Actual	2019 Budget	2020	Gen. Fund	Water
Admin Labor	\$ 563,698	\$ 558,952	\$ 580,512	580,512	-
Operations And Maintenance	\$ 188,681	\$ 200,363	\$ 212,073	212,073	-
Communications Labor	\$ 403,703	\$ 398,816	\$ 408,568	408,568	-
Operations And Maintenance	\$ 3,892	\$ 4,150	\$ 4,150	4,150	-
Capital Outlays	\$ 84,611	\$ -	\$ 28,021	28,021	-
Patrol Labor	\$ 2,246,900	\$ 2,499,751	\$ 2,596,323	2,596,323	-
Operations And Maintenance	\$ 66,256	\$ 70,840	\$ 75,632	75,632	-
Capital Outlays	\$ 133,935	\$ 119,386	\$ -	-	-
Criminal Investigation Labor	\$ 224,664	\$ 215,212	\$ 219,032	219,032	-
Operations And Maintenance	\$ 9,412	\$ 9,325	\$ 9,325	9,325	-
Drug Unit - Operations And Maintenance	\$ -	\$ 2,300	\$ -	-	-
Training Labor	\$ 55,239	\$ 81,511	\$ 87,564	87,564	
Operations And Maintenance	\$ 18,194	\$ 18,975	\$ 19,475	19,475	
Property Clerk Labor	\$ 17,261	\$ 18,127	\$ 18,575	18,575	
Parking Enforcement Labor	\$ 35,355	\$ 36,432	\$ 36,575	36,575	
Operations And Maintenance	\$ -	\$ 1,200	\$ 1,200	1,200	
Police Aides Labor	\$ 12,790	\$ 13,587	\$ 14,156	14,156	
DARE Program - Operations And Maintenance	\$ 967	\$ 100	\$ 100	100	
Mini Academy - Operations And Maintenance	\$ 10,991	\$ 100	\$ 100	100	
Explorer Program - Operations And Maintenance	\$ 791	\$ 100	\$ 100	100	
Comm Outreach - Operations And Maintenance	\$ 7,511	\$ 200	\$ 200	200	
Comm Programs - Operations And Maintenance	\$ 3,166	\$ 2,000	\$ 2,000	2,000	
K-9 Program - Operations And Maintenance	\$ 3,778	\$ 2,400	\$ 2,400	2,400	
Grand Total	\$ 4,091,795	\$ 4,253,827	\$ 4,316,081	\$ 4,316,081	-
Total Sal/FB	\$ 3,559,610	\$ 3,822,388	\$ 3,961,305	\$ 3,961,305	-
Total Other Exp	\$ 532,185	\$ 431,439	\$ 354,776	\$ 354,776	-
Grand Total	\$ 4,091,795	\$ 4,253,827	\$ 4,316,081	\$ 4,316,081	-