

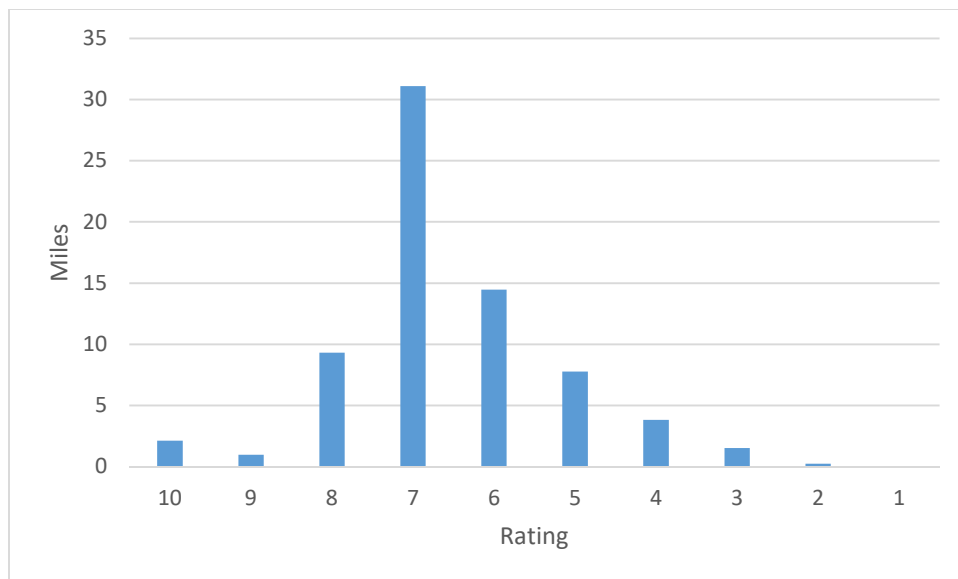
MISSION:

The mission of the Engineering Department is to provide the City of Hartford with engineering, design, staking, and inspection, and to review plans for all City public improvements including streets, sanitary sewer, water main, storm sewer, and parks. Most water main, sanitary sewer, storm sewer, and street construction projects are designed and managed through the Engineering office. Overall authority in the review and inspection of construction is conducted through this office. Engineering also assists other departments in designing parks and facilities. Using a computer-aided design system the Engineering division maintains all City maps and creates long-range development plans in conjunction with other departments. The division is responsible for the allocation of special assessments to property owners, and maintains functional authority over most capital improvement program projects.

- Design sanitary sewer, water main, and storm sewer on streets within City reconstruction projects.
- Maintain review timetable for developers' utilities and street plans for subdivisions in the City.
- Assist development of GIS system.
- Monitor effectiveness of utility construction standards and procedures.
- Provide orderly utility expansion in subdivisions.
- Study operational plan for new state storm water regulations.
- Develop strategy for detention pond maintenance.
- Work with DOT on future DOT projects within the City.
- Coordinate the sidewalk repair program.
- Provide field locates for sanitary and storm sewers for Digger's Hotline requests.

Engineering Department
10 Things Our Elected Officials Should Know

1. The Engineering Department manages most of the public works projects for the City including: Thin Asphalt Resurfacing, Chip Sealing, Sidewalk Repair/Replacement Program, Street Reconstruction projects, Sanitary Sewer construction, Water Main Construction, and Storm Sewer/ Storm Water Management construction. The Engineering Department also assists other departments with public bidding when necessary.
2. The Engineering Department rates the condition of all 81 miles of streets within the City every 2 years and reports these ratings to the Wisconsin DOT. These ratings are taken into consideration when choosing which streets to include in the CIP, Thin Asphalt Resurfacing, and Chip Sealing Programs. The chart below shows the ratings from 2017. A rating of 10 is a new street, while a rating of 1 means the street has completely failed.



3. The Engineering Department administers the City's Sidewalk Repair/Replacement program, sending out approximately 200 notices/repair orders to property owners every year. The goal is to complete sidewalk inspections of the entire city in a 10 – 12 year cycle.
4. The Engineering Department locates the sanitary sewer and storm sewer for all Digger's Hotline locate requests within the City Limits.
5. The Engineering Department manages the City's Municipal Separate Storm Sewer System (MS4) program. The program covers all aspects of storm water management including public education and public involvement. As part of the program, all 105 storm water ponds in the City and over 200 storm sewer outfalls are inspected annually. An annual report is required by the Wisconsin DNR in March. The department compiles all data and information required for

the annual report. This includes a summary of everything staff does in relation to storm water management.

6. The Engineering Department reviews engineering plans for all proposed developments within the City to ensure they comply with City requirements.
7. The Engineering Department designs one of the City's street reconstruction projects every year.
8. The Engineering Department updates and maintains most mapping for the City including: sanitary sewer, water main, storm sewer, addresses, streets, new annexations, and as-built drawings & records. A variety of City maps are provided to all City departments and other local entities (schools, Chamber of Commerce, etc.).
9. The Engineering Department reviews all materials for the Census and provides all necessary updates to the Census Bureau. This includes verifying every address and its location within the City.
10. The Engineering Department staff has been reduced by one-third since the early 2000s while the City's population continued to grow. The Assistant Engineer position was eliminated in the early 2000s and the Surveyor position was eliminated in 2010.

Bonus Information

1. 50 % of the Engineering Department staff are KISS fans.
2. 75% of the Engineering Department are originally from Fond du Lac.

GENERAL GOVERNMENT ~ Engineering

2020 Department Detail Information

ENGINEERING ~ Revenue

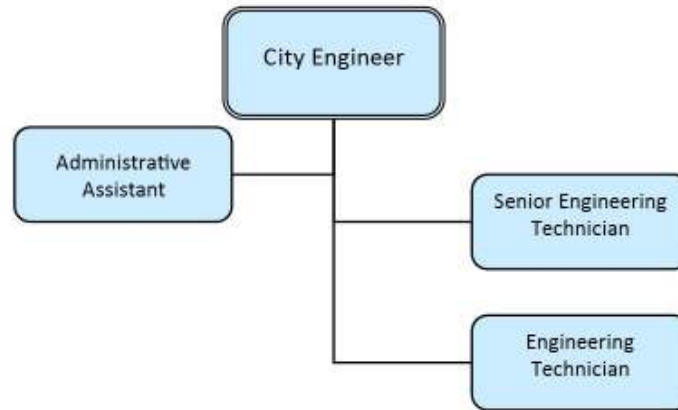
	2017 Actual	2018 Actual	2019 Budget	2020 Estimate
435600.43581 State Grants	\$ -	\$ -	\$ -	\$ -
461400.46141 Engineering Fees	\$ 1,568	\$ -	\$ 500	\$ 500
461400.46142 Certified Survey Maps	\$ 1	\$ -	\$ 500	\$ 200
461400.46143 Engineering Supplies	\$ 61	\$ 15	\$ 100	\$ 100
461400.46144 Sidewalk Permit Fees	\$ 890	\$ 1,090	\$ 700	\$ 700
461500.46150 Plans And Specs Fees	\$ 565	\$ 365	\$ 500	\$ 500
Total Building Inspection	\$ 3,085	\$ 1,470	\$ 2,300	\$ 2,000

GENERAL GOVERNMENT - Engineering
2020 Department Detail Information

ENGINEERING ~ Summary

	2018 Actual	2019 Budget	2020	Gen. Fund
Labor	\$ 85,269	\$ 91,906	\$ 87,562	87,562
Operations And Maintenance	\$ 21,533	\$ 27,865	\$ 27,896	27,896
Capital	\$ -	\$ 42,000	\$ -	0
Street Labor	\$ 60,402	\$ 69,249	\$ 56,062	56,062
Operations And Maintenance	\$ 3,876	\$ 7,000	\$ 7,000	7,000
Park Labor	\$ 14,006	\$ 13,665	\$ 13,729	13,729
Operations And Maintenance	\$ -	\$ 1,000	\$ 1,000	1,000
Grand Total	\$ 185,086	\$ 252,685	\$ 193,249	\$ 193,249
Total Sal/FB	\$ 159,677	\$ 174,820	\$ 157,353	\$ 157,353
Total Other Exp	\$ 25,409	\$ 77,865	\$ 35,896	\$ 35,896
Grand Total	\$ 185,086	\$ 252,685	\$ 193,249	\$ 193,249

GENERAL GOVERNMENT ~ Storm Water Management



MISSION:

The primary mission of Storm Water Management is to isolate funding associated with the management of storm water, monitor conformance with DNR regulations, and allocate costs of detention pond and storm sewer outfall maintenance.

- Continue to develop plans to maintain compliance with the DNR storm water permit.
- Allocate private detention pond costs to subdivisions.
- Continue to isolate storm water management costs in this division for cost analyses.
- Review the City's storm water management plan and adjust as necessary to comply with DNR standards.

GENERAL GOVERNMENT ~ Storm Water Management

2020 Department Detail Information

STORMWATER MANAGEMENT ~ Revenue

	2017 Actual	2018 Actual	2019 Budget	2020
422100.42200 Special Assessment Revenue	\$ -	\$ -	\$ -	\$ -
TOTAL	\$ -	\$ -	\$ -	\$ -

GENERAL GOVERNMENT ~ Storm Water Management

2020 Department Detail Information

STORMWATER MANAGEMENT ~ Summary

	2018 Actual	2019 Budget	2020	Gen. Fund	Water	Sewer
Labor	\$ 32,886	\$ 26,081	\$ 25,877	\$ 25,877	-	-
Operations And Maintenance	\$ 13,598	\$ 19,000	\$ 19,000	\$ 19,000	-	-
Public Education and Outreach - Labor	\$ 4,477	\$ 4,214	\$ 3,754	\$ 3,754	-	-
Operations And Maintenance	\$ 101	\$ 700	\$ 700	\$ 700	-	-
Public Involvement - Labor	\$ 4,483	\$ 4,214	\$ 3,759	\$ 3,759	-	-
Operations And Maintenance	\$ 250	\$ 500	\$ 500	\$ 500	-	-
Illicit Discharge Detection - Labor	\$ 6,241	\$ 4,807	\$ 4,262	\$ 4,262	-	-
Operations And Maintenance	\$ 172	\$ 200	\$ 200	\$ 200	-	-
Site Pollutant Control - Labor	\$ 4,185	\$ 4,208	\$ 3,505	\$ 3,505	-	-
Operations And Maintenance	\$ 77	\$ 100	\$ 100	\$ 100		
Post Construction Management - Labor	\$ 4,293	\$ 5,431	\$ 3,584	\$ 3,584	-	-
Operations And Maintenance	\$ 1,059	\$ 1,700	\$ 1,700	\$ 1,700		
Pollution Prevention - Labor	\$ 23,082	\$ 21,501	\$ 19,039	\$ 19,039		
Operations And Maintenance	\$ 1,203	\$ 2,500	\$ 2,500	\$ 2,500		
Quality Management - Labor	\$ 14,509	\$ 13,730	\$ 11,954	\$ 11,954		
Operations And Maintenance	\$ 41	\$ 100	\$ 100	\$ 100		
Storm Water System Map - Labor	\$ 18,267	\$ 13,654	\$ 15,128	\$ 15,128		
Operations And Maintenance	\$ -	\$ 100	\$ 100	\$ 100		
Grand Total	\$ 128,924	\$ 122,740	\$ 115,762	\$ 115,762	-	-
Total Sal/FB	\$ 112,423	\$ 97,840	\$ 90,862	\$ 90,862	-	-
Total Other Exp	\$ 16,501	\$ 24,900	\$ 24,900	\$ 24,900	-	-
Grand Total	\$ 128,924	\$ 122,740	\$ 115,762	\$ 115,762	-	-