


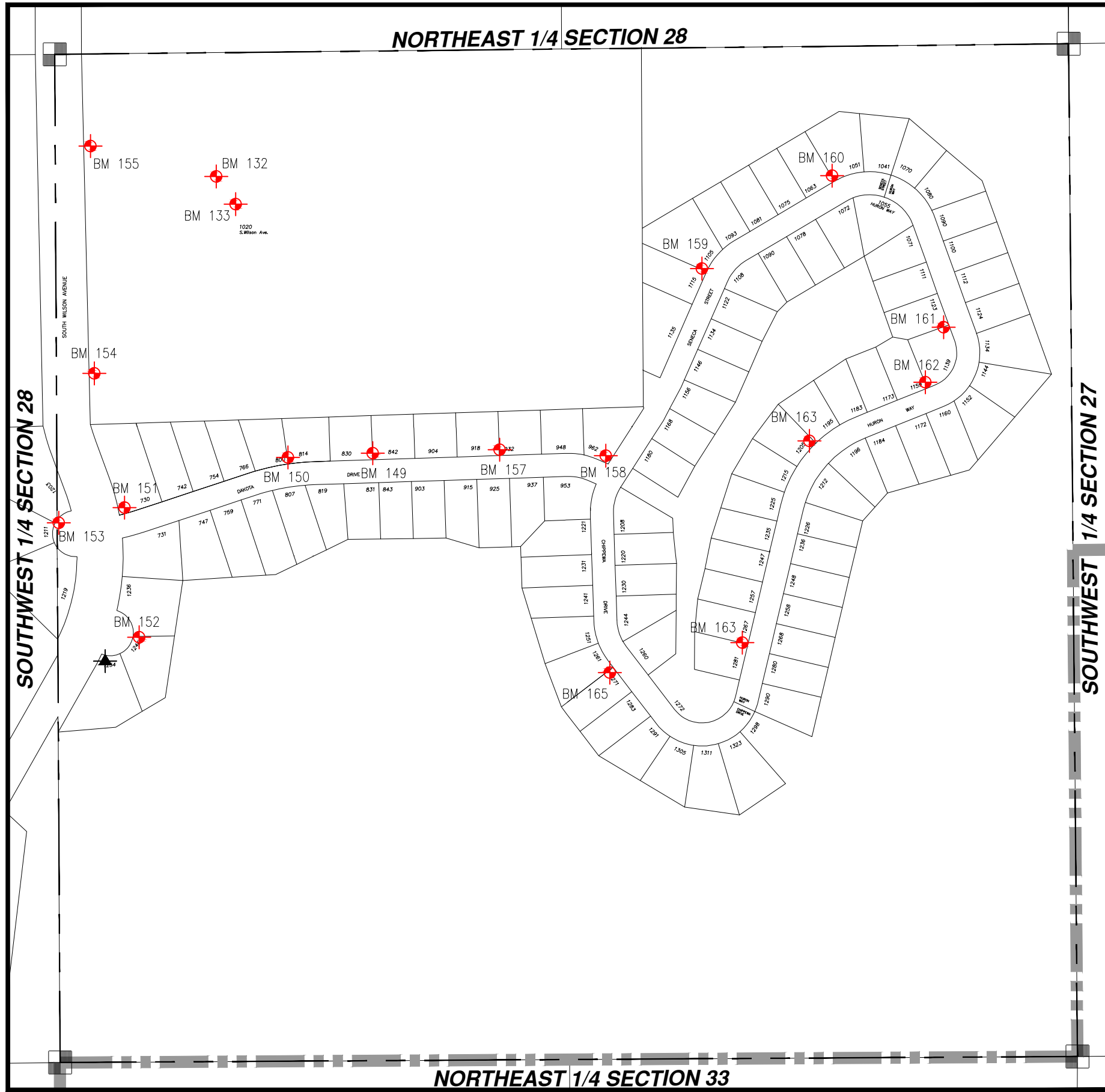




# WASHINGTON COUNTY, T10 R18 SE 1/4 SECT 28

# SE 28

 = Hyd. With NO Benchmark Info.  
 = Existing Benchmark  
 = Benchmark in Adjacent Section  
 Users Should **VERIFY** all Benchmarks Information before use.



BM #	ELEV	DESCRIPTIONS
132	1002.74	R/R SPIKE 0.5' ABOVE GROUND IN NW SIDE OF THE NORTH WOOD BACKSTOP POLE FOR WEST DIAMOND
133	1002.68	R/R SPIKE 0.5' ABOVE GROUND, EAST SIDE OF THE SOUTHEAST WOOD BACKSTOP POLE FOR THE WEST DIAMOND
149	1005.58'	FH NW BOLT W/TAG, @ #830 DAKOTA DR.
150	1004.49	FH NW BOLT W/TAG, @ #800 DAKOTA DR.
151	1002.4	FH NE BOLT W/TAG, AT 730 DAKOTA DR
152	1002.02	FH SE BOLT W/TAG, AT 1246 s. WILSON DR
153	1003.49	FH SW BOLT W/TAG, W. END OF CUL-DE-SAC AT W. END DOKATA DR
154	999.61	FH NE BOLT W/TAG, EAST SIDE OF S. WILSON AV 300' N. OF DAKOTA DR
155	998.77	FH NE BOLT W/TAG, SOUTHSIDE DRWAY, EAST SIDE OF S. WILSON, AT BALL-DIAMOND COMPLEX PARKING LOT
157	1007.78	FH NW BOLT W/TAG, AT 918 DAKOTA DR.
158	1007.14	FH SW BOLT W/TAG, NORTHWEST CORNER OF SENECA ST. AND DAKOTA DR.
159	1010.61	FH SW BOLT W/TAG, AT 1115 SENECA ST.
160	1010.29	FH SW BOLT W/TAG, AT 1063 SENECA ST.
161	1008.25	FH SW BOLT W/TAG, AT 1139 HURON DR.
162	1006.83	FH SW BOLT W/TAG, AT 1159 HURON WAY
163	1005.5	FH SW BOLT W/TAG, AT 1205 HURON WAY
164	1002.85	FH SW BOLT W/TAG, AT 1267 HURON WAY
165	1004.24	FH SE BOLT W/TAG, AT 1271 CHIPPEWA DR.