


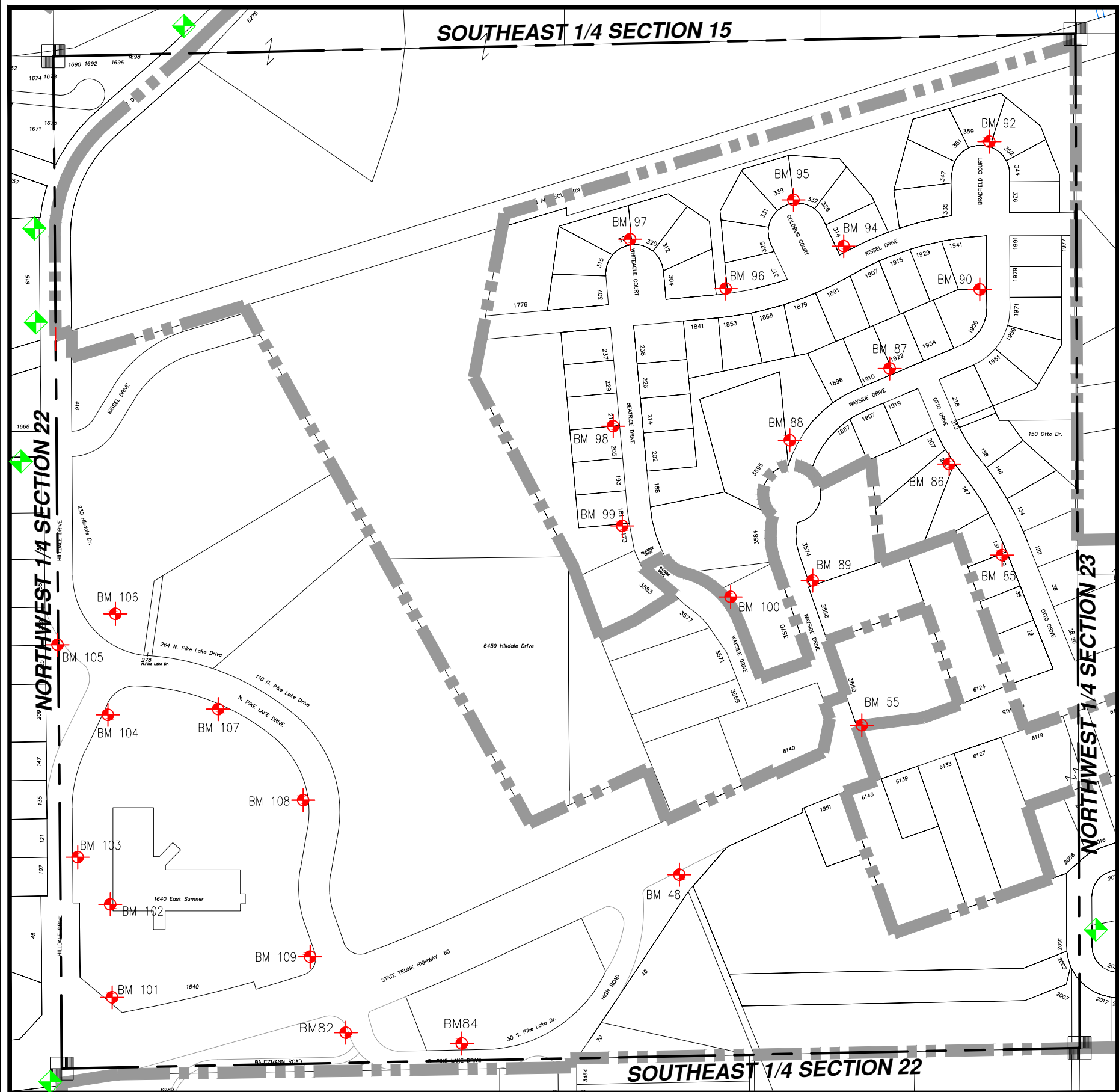


WASHINGTON COUNTY, T10 R18 NE 1/4 SECT 22

NE 22

 = Hyd. With NO Benchmark Info.
 = Existing Benchmark
 = Benchmark in Adjacent Section
Users Should VERIFY all Benchmarks Information before use.



BM #	ELEV	DESCRIPTIONS
48	1006.83	FIRE HYDRANT, NW BOLT, SE CORNER OF EAST HWY "60" AND HIGH ROAD AT HWY "60"
55	1012.70	F.H., TOP OF BOLT ON FLANGE AT ARROWHEAD, ON WAYSIDE DR. AT THE NE CORNER OF WAYSIDE DR. AND E. HWY "60"
82	1012.80	F.H., SW BOLT W/TAG, WEST SIDE OF PIKE LAKE DR. AT HWY "60"
84	1010.40	F.H. NW BOLT W/TAG, NORTH SIDE PIKE LAKE DR. 400'+- SE OF HWY "60"
85	1030.36	F.H. SW BOLT W/TAG, W. SIDE OF OTTO @ 119
86	1035.68	F.H BOLT @ ARROWHEAD, @ 201 OTTO
87	1037.81	F.H. BOLT W/TAG, N. SIDE OF WAYSIDE DR. @ 1922
88	1024.21	F.H. BOLT @ ARROWHEAD, N. SIDE OF WAYSIDE DR. ACROSS FROM 1887
89	1018.99	F.H. BOLT @ ARROWHEAD, E. SIDE OF WAYSIDE DR. @ 3568
90	1034.83	F.H. BOLT @ ARROWHEAD, ACROSS FROM 1979 WAYSIDE DR.
92	1017.23	F.H. BOLT @ ARROWHEAD, @ 352 BRADFIELD CT.
94	1033.09	F.H. BOLT @ ARROWHEAD, ACROSS FROM 1907 KISSEL DR.
95	1032.34	F.H. BOLT W/TAG, N. END OF GOLDBUG CT. @ 332
96	1031.70	F.H. BOLT @ ARROWHEAD, N. SIDE OF KISSEL, ACROSS FROM 1853
97	1024.36	F.H. BOLT @ ARROWHEAD, N. END OF WHITE EAGLE CT. @ 320
98	1019.97	FH BOLT @ ARROWHEAD, W. SIDE OF BEATRICE DR. @ 217
99	1017.98	FH BOLT @ ARROWHEAD, W. SIDE OF BEATRICE DR. @ 181
100	1016.75	FH BOLT W/TAG, E. SIDE WAYSIDE DR. ACROSS FROM 3577
101	1016.02	FIRE HYDRANT, NE BOLT, E/S HILLDALE DRIVE, ACROSS FROM BANK, 50'+- N. OF HWY 60
102	1030.00	FIRE HYDRANT, NW BOLT W/ TAG, PRIVATE FH NEAR LOADING DOCK, SW CORNER AURORA CLINIC
103	1028.33	FIRE HYDRANT, NE BOLT W/ TAG, E/S HILLDALE DRIVE, ACROSS FROM HOUSE #121
104	1033.61	FIRE HYDRANT, NE BOLT W/ TAG, SE CORNER HILLDALE DRIVE & N.PIKE LAKE DRIVE, ACROSS FROM HOUSE #209
105	1031.94	FIRE HYDRANT, SE BOLT W/ TAG, S/S N.PIKE LAKE DRIVE, @ HOUSE #225 N. PROP. LINE
106	1026.46	FIRE HYDRANT, NE BOLT W/ TAG, PRIVATE HYDRANT @ CONDO
107	1029.57	FIRE HYDRANT, SE BOLT W/ TAG, S/S N.PIKE LAKE DRIVE, 300'+- E. OF HILLDALE DRIVE
108	1026.84	FIRE HYDRANT, SW BOLT, W/S N.PIKE LAKE DRIVE, 50'+- N. OF AURORA CLINIC DRIVEWAY ENTRANCE
109	1011.96	FIRE HYDRANT, SW BOLT W/ TAG, NW CORNER N.PIKE LAKE DRIVE & E.SUMNER STREET