


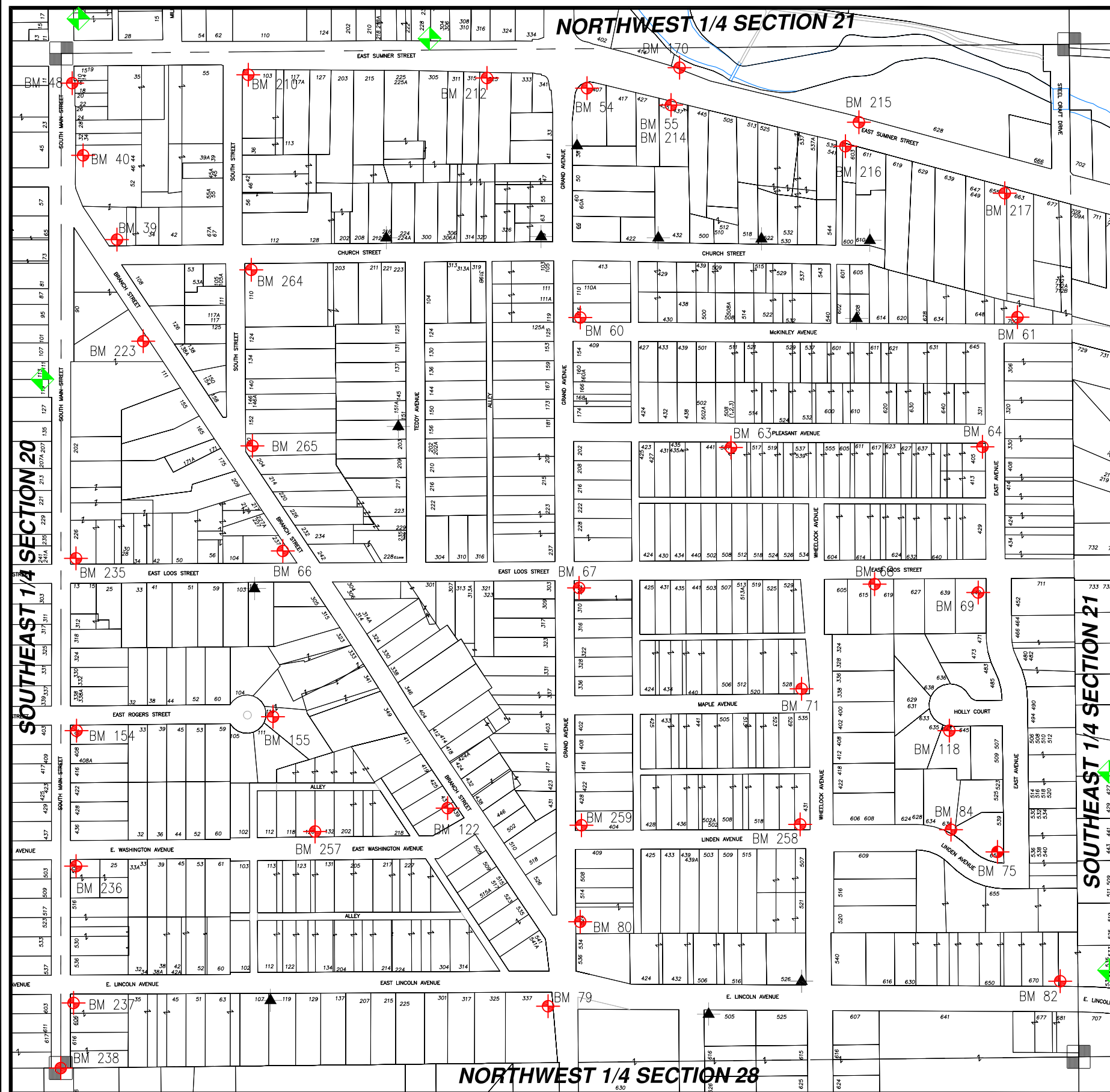


# WASHINGTON COUNTY, T10 R18

## SW 1/4 SECT 21

 = Hyd. With NO Benchmark Info.  
 = Existing Benchmark  
 = Benchmark in Adjacent Section  
**Users Should VERIFY all Benchmarks Information before use.**

# SW 21



BM #	ELEV	DESCRIPTIONS
39	1001.06	FIRE HYDRANT (NORTH BOLT W/TAG) ON NORTH EAST CORNER OF BRANCH AND CHURCH STREET (SIDE SHOT)
40	989.62	FIRE HYDRANT (NE BOLT) AT INTERSECTION OF S. MAIN AND KOSSUTH, E/S OF MAIN ST. ACROSS FROM MOBIL STATION
48	983.24	FIRE HYDRANT (TOP BOLT) EAST SIDE OF MAIN STREET (SE) CORNER OF SUMNER AND MAIN
54	989.42	FIRE HYDRANT (SE BOLT) (SE) CORNER OF GRAND AVE. AND SUMNER
55	984.40	FIRE HYDRANT (SW BOLT) SOUTH SIDE HWY "60" IN FRONT OF HOUSE #435
60	992.74	FIRE HYDRANT (NW BOLT) (NE) CORNER OF GRAND AND MCKINLEY
61	994.25	FIRE HYDRANT (TOP NORTHWEST BOLT) (NE) SIDE OF MCKINLEY AND EAST AVE.
63	1001.87	FIRE HYDRANT (SW BOLT) AT 507 PLEASANT AVE.
64	992.63	FIRE HYDRANT (TOP WEST BOLT) (SW) CORNER OF EAST AVE AND PLEASANT
66	1010.97	F.H. N.W. BOLT AT BRANCH AND LOOS N.W. CORNER HOUSE #237
67	1004.12	FIRE HYDRANT (NE BOLT) (SE) CORNER OF LOOS AND GRAND AVE.
68	990.85	FIRE HYDRANT (SW BOLT) EAST LOOS STREET IN FRONT OF HOUSE #619
69	992.64	FIRE HYDRANT (TOP BOLT) SOUTHWEST CORNER OF EAST AVE. AND EAST LOOS STREET ON EAST AVE.
71	991.56	FIRE HYDRANT (NW BOLT) APPROX. 80' WEST OF THE (NW) CORNER OF MAPLE AND WHELOCK
75	990.23	FIRE HYDRANT (TOP BOLT) (NW) CORNER OF EAST AVE. AND LINDEN
79	1000.92	FIRE HYDRANT (SW BOLT W/TAG) ON THE (SW) CORNER OF GRAND AVE. AND EAST LINCOLN
80	999.83	FIRE HYDRANT (NE BOLT W/TAG) EAST SIDE OF GRAND AVE. IN FRONT OF HOUSE #524
82	991.90	FIRE HYDRANT (TOP BOLT) (SW) LOT CORNER OF HOUSE #539 NORTH SIDE OF LINCOLN AVE., ACROSS FROM HOUSE #681
84	991.64	FIRE HYDRANT (TOP BOLT) N. SIDE OF LINDEN AVE. AT HOUSE #636 (634)
118	991.32	F.H. TOP BOLT IN HOLLY COURT AT HOUSE #643
122	1007.68	F.H. S.E. BOLT N.W. CORNER OF BRANCH AND WASHINGTON
154	1012.92	F.H. N.W. BOLT AT ARROW POINT ON FLANGE, NEW F.H. S. SIDE OF E. ROGERS AT S.E. CORNER OF E. ROGERS AND MAIN.
155	1010.39	F.H. S.W. BOLT AT ARROW POINT ON FLANGE, NEW F.H. AT E. END OF CUL-DE-SAC AT HOUSE #116 EAST ROGERS.
170	983.38	HEAD OF R/R SPIKE, SOUTH SIDE OF UTILITY POLE #96-1275, NORTH SIDE OF E. SUMNER ST., ACROSS FROM HOUSE #435/437
210	1005.38	FIRE HYDRANT, EAST SIDE OF SOUTH STREET AT EAST SUMNER, S.E. BOLT (CHIS "+") AT ARROWHEAD
212	1000.38	FIRE HYDRANT, SOUTH BOLT (CHIS "+") AT ARROWHEAD, SOUTH SIDE OF EAST SUMNER NEAR WEST LOT LINE FOR HOUSE #325
215	988.31	FIRE HYDRANT N/NW BOLT WITH CHIS "+" NORTH SIDE OF EAST SUMNER NEAR FOUNTAIN, ACROSS FROM HOUSE #541
214	985.88	FIRE HYDRANT, SOUTHWEST BOLT AT ARROWHEAD (CHIS "+") SOUTH SIDE OF EAST SUMNER AT HOUSE #435/437
216	990.09	FIRE HYDRANT, S.E. BOLT AT ARROWHEAD (CHIS "+") SOUTH SIDE OF E. SUMNER, EAST SIDE OF ALLEY AND WEST OF HOUSE #611
217	992.85	FIRE HYDRANT SOUTH SIDE OF EAST SUMNER, WEST OF HOUSE #663, WEST BOLT AT ARROWHEAD (CHIS "+")
223	1011.33	FIRE HYDRANT WEST SIDE OF BRANCH ST ACROSS FROM HOUSE #138 S.W. BOLT WITH TAG
235	1010.80	FIRE HYDRANT, NW BOLT (NO TAG), NE CORNER OF SOUTH MAIN AND EAST LOOS ON SOUTH MAIN
236	1008.73	FIRE HYDRANT, NE BOLT WITH TAG, SE CORNER OF SOUTH MAIN AND EAST WASHINGTON ON SOUTH MAIN
237	1009.58	FIRE HYDRANT, NW BOLT AT ARROWHEAD, SE CORNER OF EAST LINCOLN AND SOUTH MAIN ON EAST LINCOLN
238	1006.08	TOP OF BRASS CAP SECTION CORNER MONUMENT, SW CORNER OF SECTION 21, IN SOUTH MAIN AT #617
257	1004.00	FIRE HYDRANT, NW BOLT W/ TAG, N/S E. WASHINGTON AVE. BETWEEN HSE #126 & HSE #132
258	991.73	FIRE HYDRANT, NW BOLT W/ TAG, NW CORNER LINDEN AVENUE & WHELOCK AVENUE
259	1007.26	FIRE HYDRANT, NW BOLT W/ TAG, NE CORNER GRAND AVENUE & LINDEN AVENUE
264	1010.44	FIRE HYDRANT, NE BOLT W/ TAG, ON SOUTH STREET, SE CORNER SOUTH ST AND CHURCH ST
265	1010.14	FIRE HYDRANT, NE BOLT W/ TAG, ON EAST SIDE SOUTH STREET AT BRANCH STREET

Date Plotted: February 2018  
 R:\Projects\Survey\bm\_book\_current\SW21.dwg