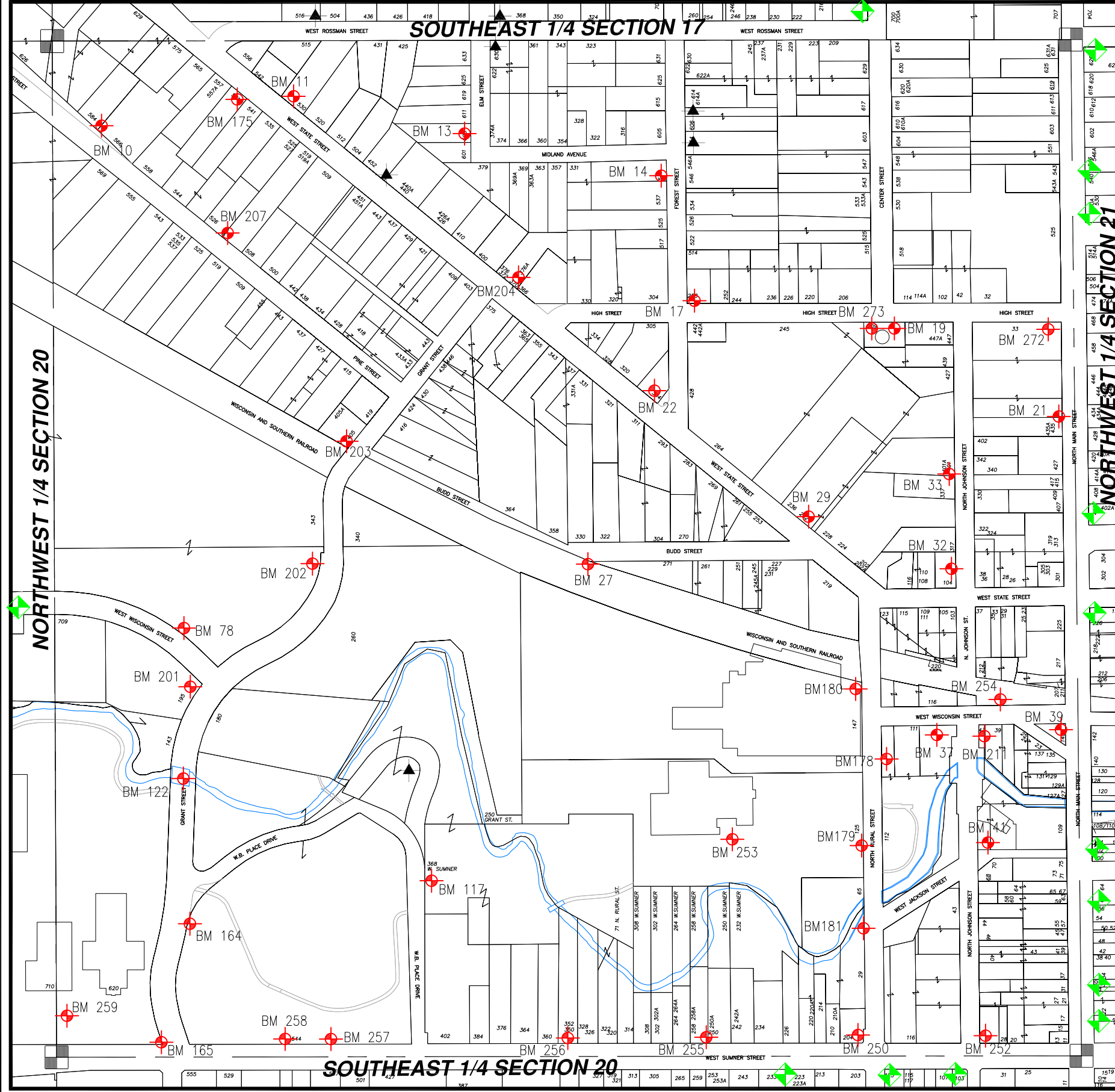


WASHINGTON COUNTY, T10 R18 NE 1/4 SECT 20



NE 20



- ▲ = Hyd. With NO Benchmark Info.
- = Existing Benchmark
- ◀ = Benchmark in Adjacent Section

Users Should VERIFY all Benchmarks Information before use.

| BM # | ELEV | DESCRIPTIONS |
|------|----------|--|
| 10 | 981.25' | FIRE HYDRANT, NE BOLT, NORTH SIDE OF PINE STREET (SEE CADASTRAL MAP FOR LOCATION) |
| 11 | 991.68' | FIRE HYDRANT (EAST BOLT) NORTH SIDE OF STREET AND APPROX. 800' OF INTERSECTION OF HIGH AND WEST STATE STREET |
| 13 | 1005.18' | FIRE HYDRANT (BETWEEN SECOND AND THIRD HOUSE ON WEST SIDE OF ELM STREET) NORTH OF MIDLAND |
| 14 | 1035.07' | FIRE HYDRANT (NW BOLT) WEST SIDE OF FOREST STREET, JUST SOUTH OF INTERSECTION OF MIDLAND AND FOREST |
| 17 | 1025.12 | FIRE HYDRANT (NE BOLT) (NE) CORNER OF HIGH STREET AND FOREST STREET |
| 19 | 1031.75' | FIRE HYDRANT (SW BOLT) SOUTH SIDE OF HIGH STREET JUST SOUTH OF THE INTERSECTION OF HIGH STREET AND CENTER STREET |
| 21 | 1014.74 | FIRE HYDRANT (SW BOLT) WEST SIDE OF N. MAIN, EAST OF HARTHAVEN PARKING LOT |
| 22 | 1001.56' | FIRE HYDRANT (EAST BOLT) AT INTERSECTION OF WEST STATE STREET AND FOREST STREET |
| 27 | 994.08' | FIRE HYDRANT (SE BOLT W/TAG) AT THE END OF BUDD STREET, ACROSS FROM HOUSE #330 |
| 29 | 1003.02' | FIRE HYDRANT (NW BOLT W/TAG) NORTH SIDE OF W. STATE STREET AND IN FRONT OF FIRST HOUSE SOUTH OF ST. KILIAN CHURCH |
| 32 | 997.27' | FIRE HYDRANT (TOP BOLT) (NW) CORNER OF WEST STATE STREET AND JOHNSON STREET |
| 33 | 1013.86' | FIRE HYDRANT (NW BOLT) MID-BLOCK ON WEST SIDE OF JOHNSON STREET MIDBLOCK BETWEEN HIGH AND STATE |
| 37 | 968.63' | BRASS PLUG (#62) IN CONCRETE BASE OF FLAGPOLE AT THE FIRE STATION |
| 39 | 983.68' | FIRE HYDRANT (NORTH BOLT) (SW) CORNER OF WISCONSIN AND MAIN STREET. |
| 41 | 968.64' | FIRE HYDRANT (NE BOLT W/TAG) (NE) CORNER OF JACKSON AND JOHNSON STREET |
| 78 | 964.01 | FIRE HYDRANT, NW BOLT, N/SIDE W. WISCONSIN, W/SIDE MIDAS DRIVE BY YELLOW POST |
| 117 | 967.00' | FIRE HYDRANT, NE BOLT W/TAG, EAST SIDE OF WB PLACE DR., 300' ± NORTH OF W. SUMNER AT THE SW CORNER OF FACTORY BLDG |
| 122 | 967.30' | D.O.T. ALUM. CAP IN TOP OF CONCRETE BRIDGE WALL, EAST SIDE OF GRANT ST BRIDGE, SE AREA OF WALL, 3' MORE OR LESS SOUTH OF LIGHT POLE ALSO ON TOP OF BRIDGE WALL [SIDE SHOT] |
| 148 | 1024.73' | BRASS CAP SECTION CORNER MONUMENT FOR THE NE CORNER OF SECTION 20, IN NORTH MAIN AT ROSSMAN |
| 164 | 964.79 | FIRE HYDRANT, TOP OF BOLT AT ARROWHEAD, SOUTHEAST CORNER OF GRANT AND W.B. PLACE DRIVE |
| 165 | 970.15' | FIRE HYDRANT ON GRANT SOUTHEAST OF SMALL SAN. SEWER BUILDING, NORTHWEST CORNER OF GRANT AND WEST SUMNER, NORTHEAST AT ARROWHEAD |
| 175 | 985.89' | FIRE HYDRANT, SE BOLT W/TAG, SW SIDE OF STATE STREET AT #551 |
| 178 | 968.71' | FIRE HYDRANT, NE BOLT W/TAG, WEST SIDE OF THE HARTFORD FIRE DEPT. ON THE EAST SIDE OF N. RURAL ST. |
| 179 | 966.08' | FIRE HYDRANT, SW BOLT W/TAG, JUST NORTH OF THE REC. DEPT. SOUTH DRIVEWAY ON THE WEST SIDE OF N. RURAL |
| 180 | 976.96' | FIRE HYDRANT, SW BOLT W/TAG, NEAR THE NE CORNER OF THE AUTO MUSEUM(#147), WEST SIDE OF N. RURAL, 70' OR SO SOUTH OF THE RAILROAD TRACKS |
| 181 | 968.97' | FIRE HYDRANT, NW BOLT W/TAG, WEST SIDE OF N. RURAL, 50' OR SO SOUTH OF BRIDGE |
| 201 | 962.19' | FIRE HYDRANT, SW BOLT W/ TAG, SW CORNER OF W. WISCONSIN AND GRANT |
| 202 | 976.63' | FIRE HYDRANT, SW BOLT W/ TAG, W/S GRANT @ SE CORNER MIDAS BLDG. |
| 203 | 980.65' | FIRE HYDRANT, SW BOLT W/ TAG, W/S GRANT, JUST N. OF R/R TRACKS @ HSE. #405 |
| 204 | 995.99' | FIRE HYDRANT, NW BOLT W/ TAG, N/S STATE ST @ GRANT EXT. N., @ HSE. #376 |
| 207 | 980.76' | FIRE HYDRANT, SE BOLT @ ARROWHEAD, N/S PINE STREET, @ HSE #524 |
| 211 | 969.52' | FIRE HYDRANT, SE BOLT W/TAG, E. SIDE OF JOHNSON ST. AT W. WISCONSIN |
| 250 | 974.92' | FIRE HYDRANT. BOLT @ ARROWHEAD, NW. COR. W. SUMNER STREET (S.T.H. 60) AND N. RURAL STREET |
| 252 | 972.90' | FIRE HYDRANT, NW BOLT W/TAG, NE. COR. N. JOHNSON STREET AND W. SUMNER STREET (S.T.H. 60) |
| 253 | 967.07' | FIRE HYDRANT, BOLT @ ARROWHEAD, NEAR SW. COR. OF REC. DEPT. BLDG. IN GRASS AREA |
| 254 | 972.01' | FIRE HYDRANT, NE. BOLT W/EXT. TAG, N. SIDE OF W. WISCONSIN STREET, BETWEEN N. MAIN STREET AND N. JOHNSON STREET |
| 255 | 979.62' | FIRE HYDRANT, NE BOLT W/ TAG, N/S W.SUMNER STREET, @ HOUSE #250 |
| 256 | 978.91' | FIRE HYDRANT, NW BOLT W/ TAG, N/S W.SUMNER STREET, @ HOUSE #350/352 |
| 257 | 968.54' | FIRE HYDRANT, NW BOLT W/ BURY TAG, N/S W.SUMNER STREET, ACROSS FROM D&D TIRE #507 |
| 258 | 966.41' | FIRE HYDRANT, N/W BOLT W/ TAG, N/S W.SUMNER STREET, ACROSS FROM BP GAS STA., 10' N. OF B.O.W. |
| 259 | 971.93' | FIRE HYDRANT, NE BOLT W/ TAG, N/S W.SUMNER STREET, JUST OFF PARKING LOT #710 W.SUMNER / CITY GARAGE |
| 272 | 1023.66 | FIRE HYDRANT, SE BOLT W/TAG, SW CORNER N. MAIN & HIGH ST |
| 273 | 1032.51 | FIRE HYDRANT, SE BOLT W/ TAG, S/S HIGH ST @ WATER TOWER, WESTERLY HYDRANT |