



WASHINGTON COUNTY, T10 R18 NE 1/4 SECT 17

NE 17

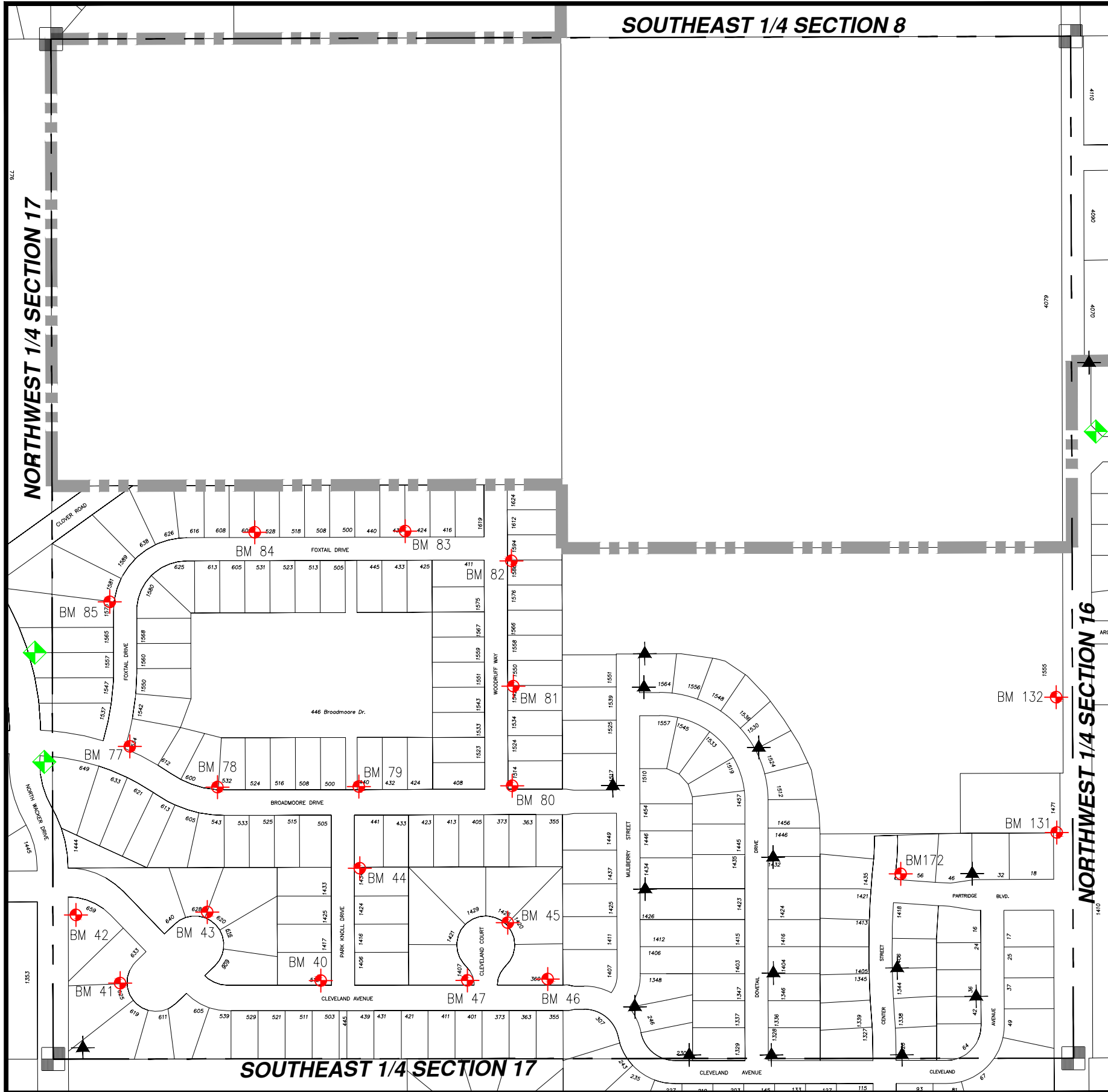
= Hyd. With NO Benchmark Info.
 = Existing Benchmark
 = Benchmark in Adjacent Section
 Users Should **VERIFY** all Benchmarks Information before use.

SOUTHEAST 1/4 SECTION 8

NORTHWEST 1/4 SECTION 17

NORTHWEST 1/4 SECTION 16

SOUTHEAST 1/4 SECTION 17



BM #	ELEV	DESCRIPTIONS
40	1021.95	FIRE HYDRANT (NW BOLT W/TAG) WEST CORNER OF PARK KNOLL DRIVE AND CLEVELAND AVE.
41	1023.03	FIRE HYDRANT (SW BOLT) IN THE FIRST HALF COURT SOUTH ON CLEVELAND AVE.
42	1027.32	FIRE HYDRANT (NE BOLT) SOUTHEAST CORNER OF WACKER DRIVE AND CLEVELAND AVE.
43	1022.83	FIRE HYDRANT (NW BOLT W/TAG) ON THE FIRST HALF COURT ON NORTH SIDE OF CLEVELAND
44	1023.1	FIRE HYDRANT (NE BOLT W/TAG) @ THE NORTH END OF PARK KNOLL DRIVE
45	1024.84	FIRE HYDRANT (NW BOLT W/TAG) IN CLEVELAND COURT ON THE LOT-LINE OF HOUSE #1420 & #1426
46	1026.38	FIRE HYDRANT (NW BOLT W/TAG) @ THE NORTH SIDE, EAST END OF CLEVELAND AVE., 200' MORE OR LESS EAST OF CLEVELAND COURT
47	1023.77	FIRE HYDRANT (NW BOLT W/TAG) WEST CORNER OF CLEVELAND AVE. AND CLEVELAND COURT
77	1031.59	FIRE HYDRANT, BOLT ON FLANGE AT POINT OF ARROW, ON BROADMOORE, NE CORNER OF BROADMOORE AND FOXTAIL
78	1030.23	FIRE HYDRANT, BOLT ON FLANGE AT POINT OF ARROW, NORTH SIDE OF BROADMOORE AT LOTS 33/32, MIDWAY BETWEEN FOXTAIL AND PARK KNOLL DRIVE
79	1028.89	FIRE HYDRANT, BOLT ON FLANGE AT POINT OF ARROW, NORTH SIDE OF BROADMOORE AT PARK KNOLL DRIVE
80	1038.91	FIRE HYDRANT, BOLT ON FLANGE AT POINT OF ARROW, ON BROADMOORE AT THE NE CORNER OF BROADMOORE AND WOODRUFF
81	1043.57	FIRE HYDRANT, BOLT ON FLANGE AT POINT OF ARROW, EAST SIDE OF WOODRUFF, MIDWAY BETWEEN BROADMOORE AND FOXTAIL
82	1046.73	FIRE HYDRANT, BOLT ON FLANGE AT POINT OF ARROW, EAST SIDE OF WOODRUFF AT FOXTAIL
83	1047.66	FIRE HYDRANT, BOLT ON FLANGE AT POINT OF ARROW, NORTH SIDE OF FOXTAIL AT HOUSE #432
84	1044.57	FIRE HYDRANT, BOLT ON FLANGE AT POINT OF ARROW, NORTH SIDE OF FOXTAIL AT HOUSE #600
85	1034.39	FIRE HYDRANT, BOLT ON FLANGE AT POINT OF ARROW, WEST SIDE OF FOXTAIL AT HOUSE #1581
131	1012.95	FIRE HYDRANT, NW BOLT, W/S N.MAIN ST., @ NE COR. HSE #18 PARTRIDGE BLVD.
132	1006.95	R/R SPIKE, EAST SIDE UTILITY POLE #77-11259
172	1028.1	FIRE HYDRANT, NE FLANGE BOLT, NE COR CENTER ST. AND PARTRIDGE BLVD.