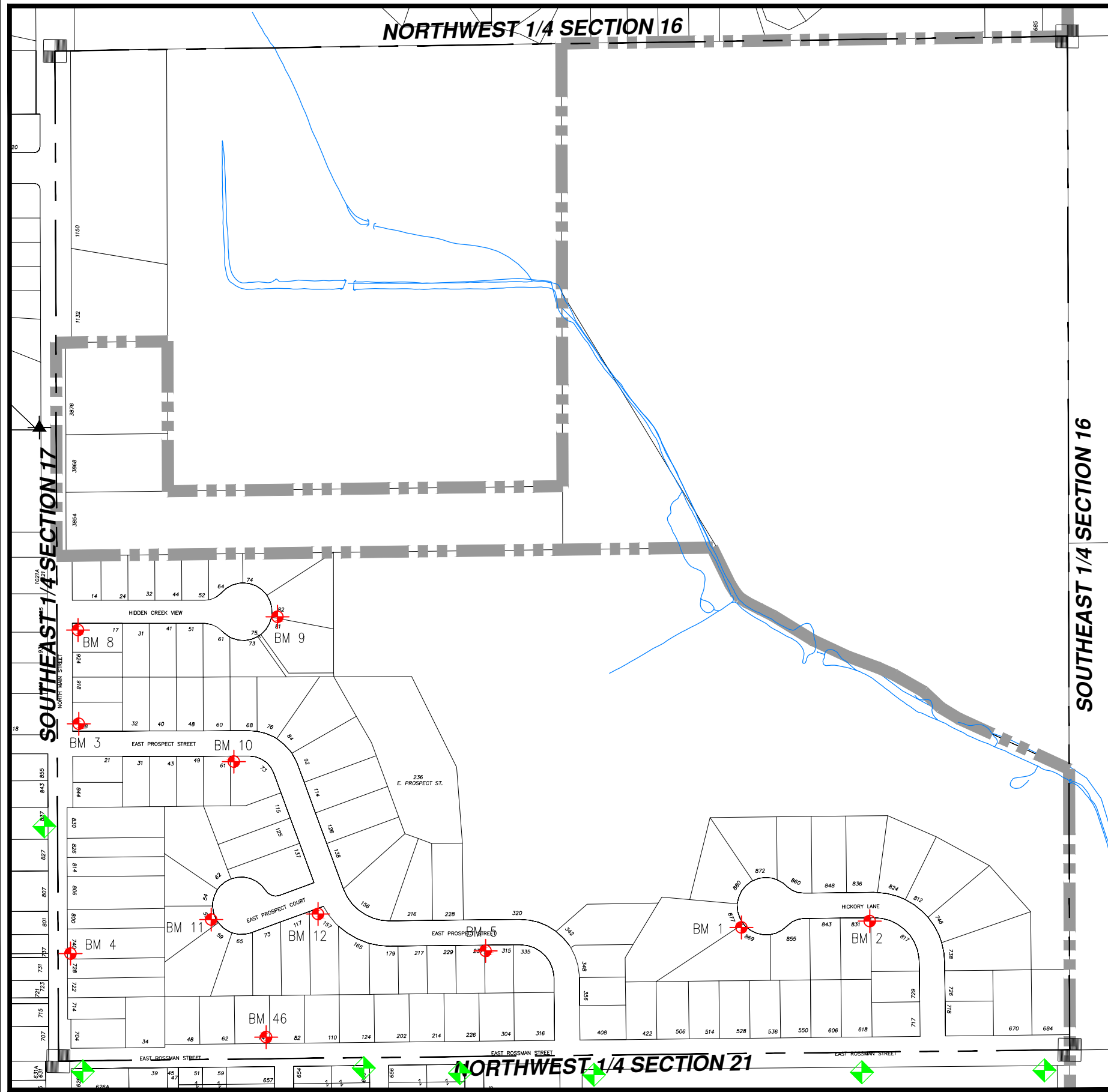




# WASHINGTON COUNTY, T10 R18 SW 1/4 SECT 16

# SW 16

- = Hyd. With NO Benchmark Info.
  - = Existing Benchmark
  - = Benchmark in Adjacent Section
- Users Should VERIFY all Benchmarks Information before use.*



BM #	ELEV	DESCRIPTIONS
1	1008.24	FIRE HYDRANT (SOUTH BOLT W/ TAG) ON SOUTH SIDE OF HICKORY LANE IN CUL-DE-SAC
2	1010.92	FIRE HYDRANT (SOUTHEAST BOLT W/ TAG) ON SOUTH SIDE OF HICKORY LANE OPPOSITE HOUSE #824
3	1017.74	FIRE HYDRANT (BOLT @ POINTING ARROWHEAD) ON (NE) CORNER OF EAST PROSPECT AND NORTH MAIN
4	1019.27	FIRE HYDRANT (BOLT @ POINTING ARROWHEAD) EAST SIDE OF NORTH MAIN IN FRONT OF HOUSE #728
5	1009.37	FIRE HYDRANT (BOLT @ POINTING ARROWHEAD) ON EAST PROSPECT ST. IN FRONT OF HOUSE #315
8	1023.13	FIRE HYDRANT (BOLT @ POINTING ARROWHEAD) EAST SIDE OF N. MAIN @ (SE) CORNER OF N. MAIN AND HIDDEN CREEK VIEW
9	1026.96	FIRE HYDRANT (NE BOLT WITH TAG) @ THE END OF HIDDEN CREEK VIEW IN FRONT OF HOUSE #81
10	1020.76	FIRE HYDRANT (BOLT @ POINTING ARROWHEAD) SOUTH SIDE OF EAST PROSPECT IN FRONT OF HOUSE #61
11	1012.74	FIRE HYDRANT (BOLT @ POINTING ARROWHEAD) AT THE END OF EAST PROSPECT COURT
12	1010.95	FIRE HYDRANT (BOLT @ POINTING ARROWHEAD) SOUTH CORNER OF EAST PROSPECT COURT AND EAST PROSPECT ST.
46	1027.03	F.H. S.W. BOLT AT ARROW TIP, N. SIDE OF E. ROSSMAN, N.W. OF FIRST ST. EXTENDED