

NOTE: SIDEWALK THICKNESS AT DRIVEWAY APPROACH SHALL BE 6"  
 AT ALL OTHER LOCATIONS SIDEWALK THICKNESS SHALL BE 4"  
 ANY CHANGES OF THESE SPECIFICATIONS MUST BE MADE WITH  
 THE CONSENT AND APPROVAL OF THE CITY ENGINEER

TYPE OF STREET	RIGHT OF WAY	GRASS PLOT	FRONT OF SIDEWALK IS HIGHER THAN BACK OF CURB BY:		FRONT OF SIDEWALK IS HIGHER THAN BACK OF CURB BY:	
ARTERIAL OR COLLECTOR	80.00'	9.5'	0.28'	3 3/8"	0.39'	4 5/8"
COLLECTOR OR SUB COLLECTOR	66.00'	8.5'	0.28'	3 1/8"	0.37'	4 3/8"
SUB COLLECTOR OR LOCAL ACCESS STREET	60.00'	5.5'	0.20'	2 3/8"	0.29'	3 1/2"
LOCAL ACCESS STREET	49.50'	3.5'	0.16'	1 7/8"	0.25'	3"

TYPICAL SIDEWALK LAYOUT

NOT TO SCALE

FILE NAME:

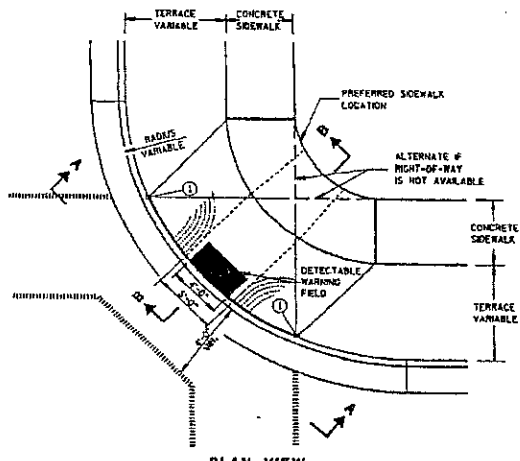
Montana\Server\Projects\Blocks\Sidewalk\_Typical

DATE:

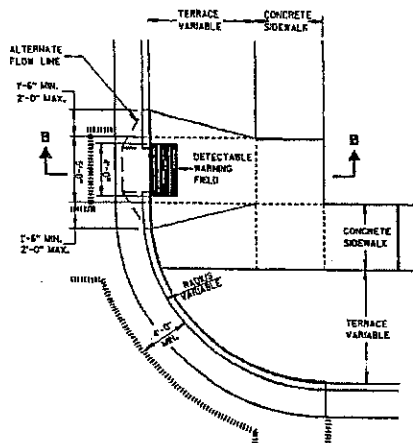
MARCH, 2004

DRAWN BY:

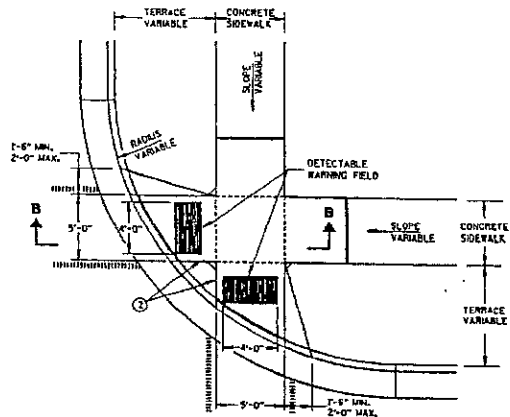
jwep



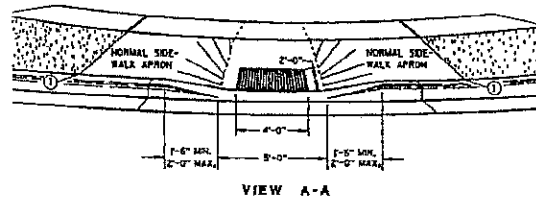
PLAN VIEW  
TYPE 1 RAMP  
(CENTER OF CORNER RADIUS)



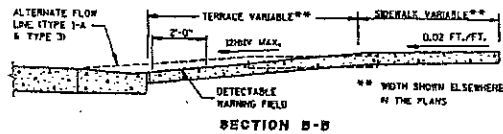
PLAN VIEW  
TYPE 3 RAMP  
(OUTSIDE OF CROSSWALK AREA)



PLAN VIEW  
TYPE 2 RAMP  
(ON LINE WITH SIDEWALK)



VIEW A-A



SECTION B-B

**GENERAL NOTES**

DETAILS OF CONSTRUCTION, MATERIALS AND WORKMANSHIP NOT SHOWN ON THIS DRAWING SHALL CONFORM TO THE PERTINENT REQUIREMENTS OF THE STANDARD SPECIFICATIONS AND THE APPLICABLE SPECIAL PROVISIONS.

RAMPS SHALL BE BUILT AT 12% OR FLATTER. WHEN NECESSARY, THE SIDEWALK ELEVATION MAY BE LOWERED TO MEET THE HIGH POINT ON THE RAMP.

TYPE 1 RAMPS SHALL HAVE A NORMAL SIDEWALK APRON AND CURB ON BOTH SIDES OF RAMP.

DETECTABLE WARNING FIELD SHALL BE MEASURED AND PAID BY THE SQUARE FOOT AS "CURB RAMP DETECTABLE WARNING FIELD". THE CONCRETE PEDESTRIAN CURB, IF NEEDED, SHALL BE MEASURED AND PAID BY THE LINEAL FOOT AS "CONCRETE CURB PEDESTRIAN". ALL OTHER CONCRETE SIDEWALK IN THE CURB RAMP AREA SHALL BE MEASURED AND PAID BY THE SQUARE FOOT AS CONCRETE SIDEWALK.

SELECT CURB RAMP DETECTABLE WARNING FIELD MATERIALS AND DEVICES FROM THE DEPARTMENT'S APPROVED MATERIALS LIST. THE COLOR OF THE DETECTABLE WARNING FIELD IS SPECIFIED ELSEWHERE AND IS INCIDENTAL TO THE BID ITEM OF "CURB RAMP DETECTABLE WARNING FIELD".

SURFACE TEXTURE OF THE RAMP SHALL BE OBTAINED BY COARSE BROOMING TRANSVERSE TO THE SLOPE OF THE RAMP.

USE THE TYPE 3 RAMP ONLY WHEN A TYPE 1 OR TYPE 2 CANNOT BE ACHIEVED BECAUSE OF FIELD CONDITIONS.

- ① THIS POINT IS AN EXTENSION OF OUTSIDE EDGE OF APPROACHING SIDEWALK WHERE IT MEETS THE BACK OF CONCRETE CURB.
- ② WHEN THIS DISTANCE IS LESS THAN 6'-0" IT MAY BE DIFFICULT TO ACHIEVE A 12% SLOPE, OR FLATTER, ON THE RAMP. REDUCE CURB HEIGHT IN TRIANGLE AREA TO ACHIEVE 12% SLOPE, OR FLATTER, ON RAMP. 2" MINIMUM CURB HEIGHT.

**LEGEND**

- 1/2" EXPANSION JOINT—SIDEWALK
- - - - - CONTRACTION JOINT FIELD LOCATED
- ||||| PAVEMENT MARKING CROSSWALK (ORIED)
- - - - - ALTERNATIVE LAYOUT

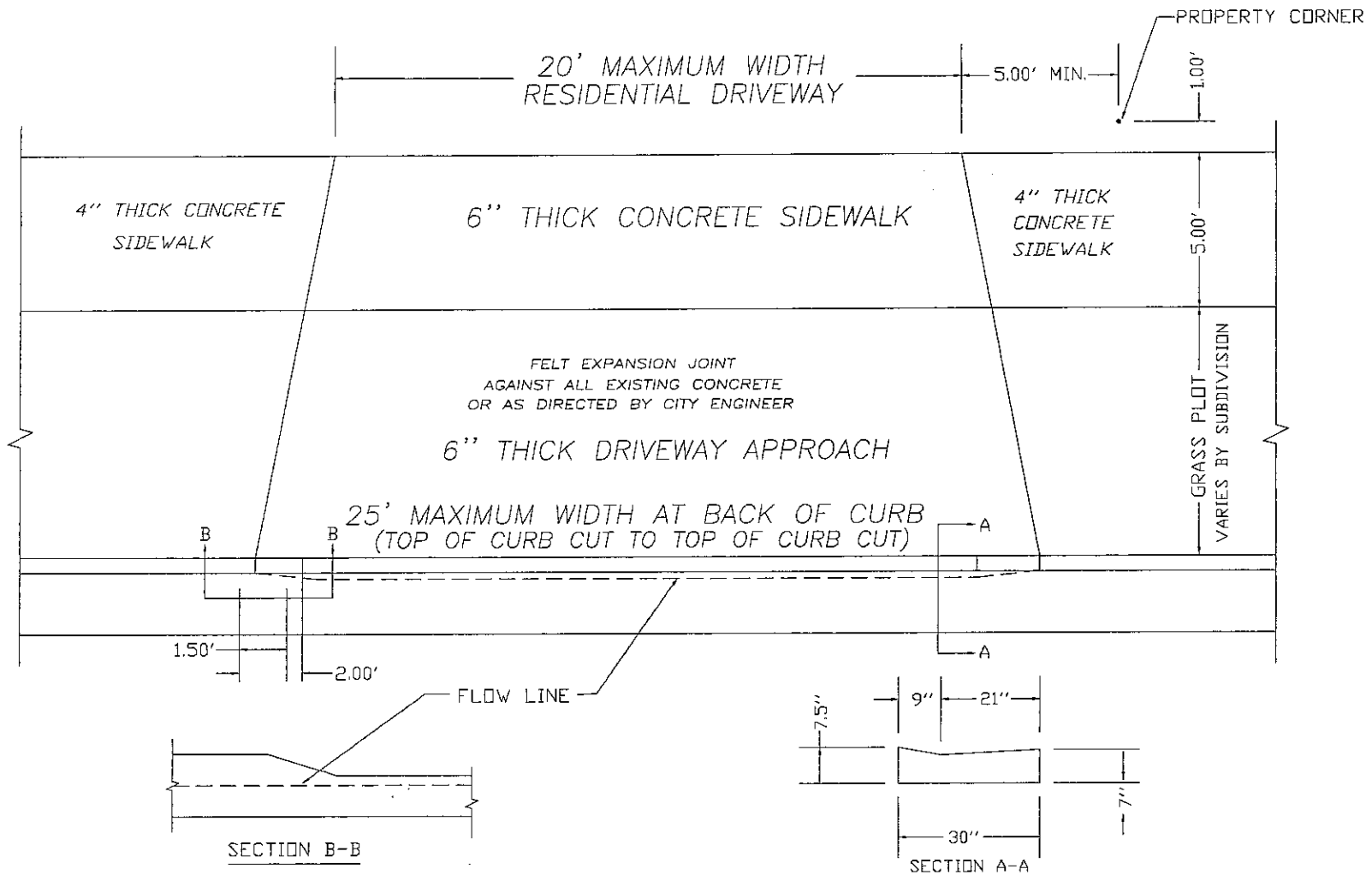
CURB RAMPS  
TYPES 1, 2 AND 3

STATE OF WISCONSIN  
DEPARTMENT OF TRANSPORTATION

S.D.D. 8 D 5-90

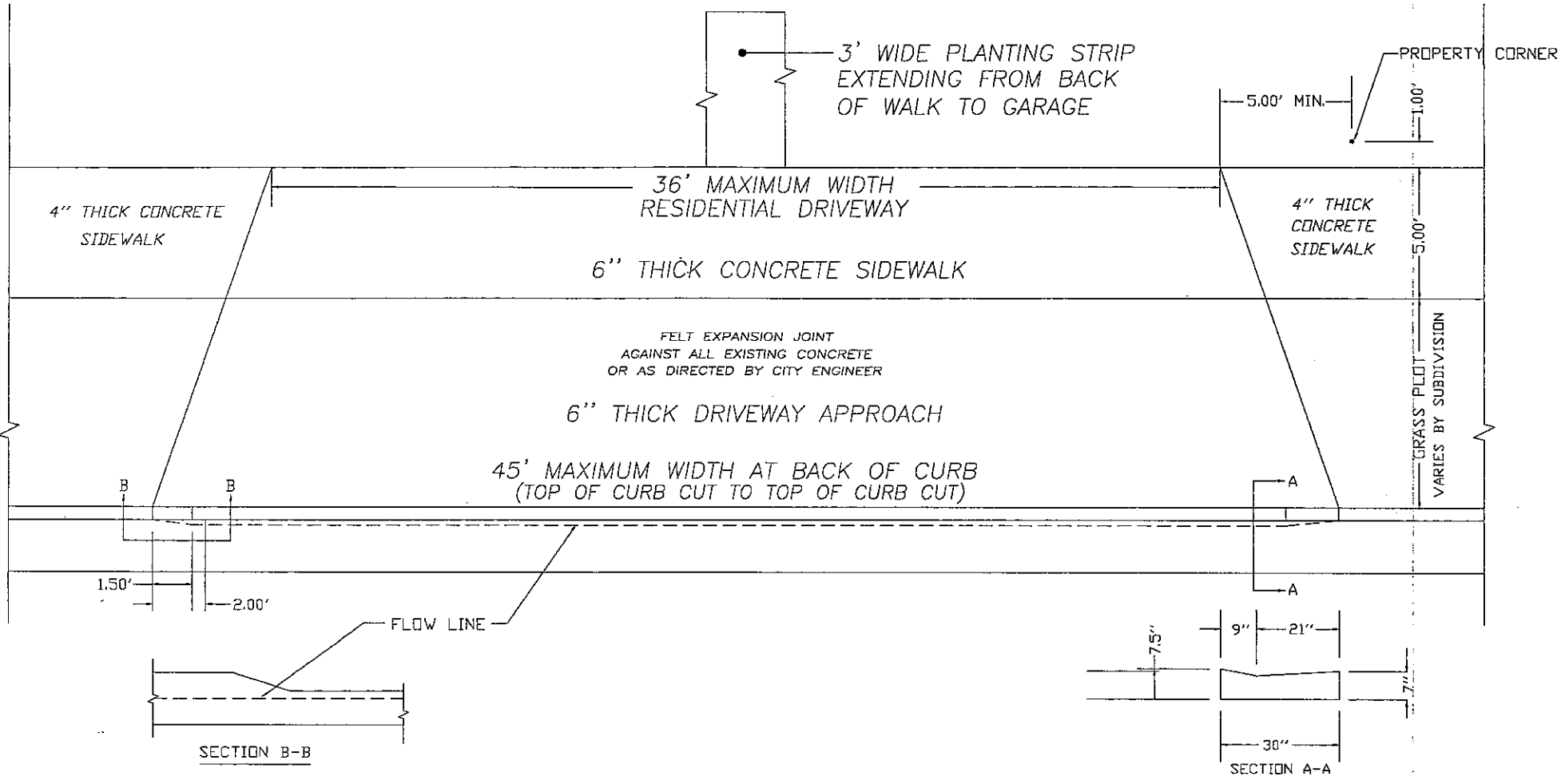
S.D.D. 8 D 5-90

# SINGLE FAMILY DRIVEWAY APPROACH



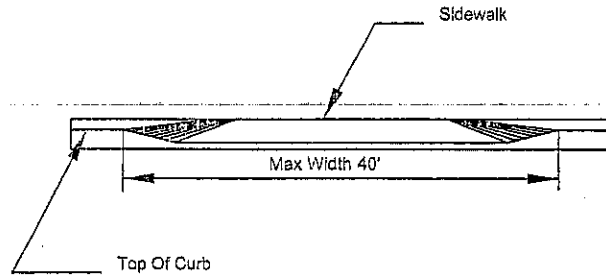
SHEET DESCRIPTION	TYPICAL DRIVEWAY APPROACH		FILE NAME: MONTANA\SEVERN\PROJECTS\BLOCKS\DRIVEWAY_APPROACH	DATE: 4-30-02
	SCALE: 1" = 5'	DRAWN BY: Jwep	REVISED: 4-23-03	

# TWO FAMILY WITH COMMON DRIVEWAY APPROACH

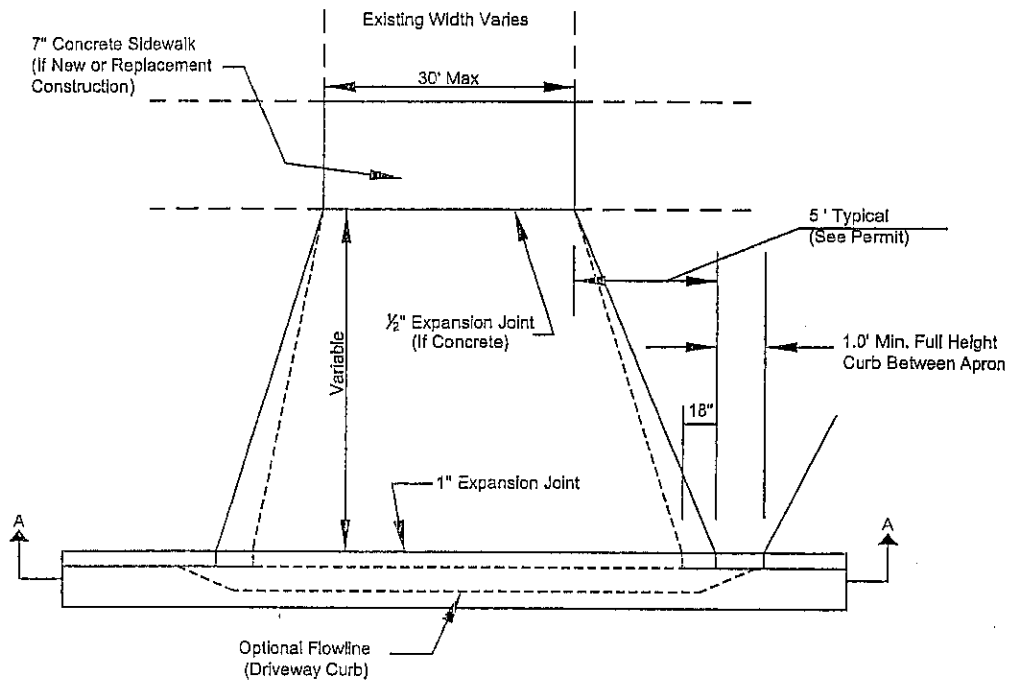


SHEET DESCRIPTION	<b>TYPICAL DRIVEWAY APPROACH</b>	FILE NAME: MONTANA\SEVER\PROJECTS\BLDGS\DRIVEWAY_APPROACH	DATE: 3-22-04
		SCALE: NOT TO SCALE	DRAWN BY: jwp
			REVISED: 4-23-03

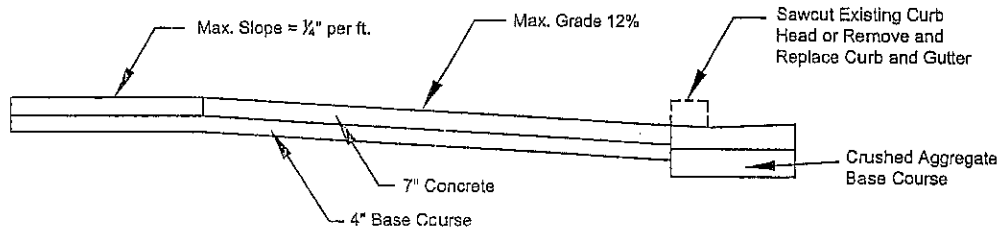
# Commercial Driveway Detail



Section A-A



Plan



Profile