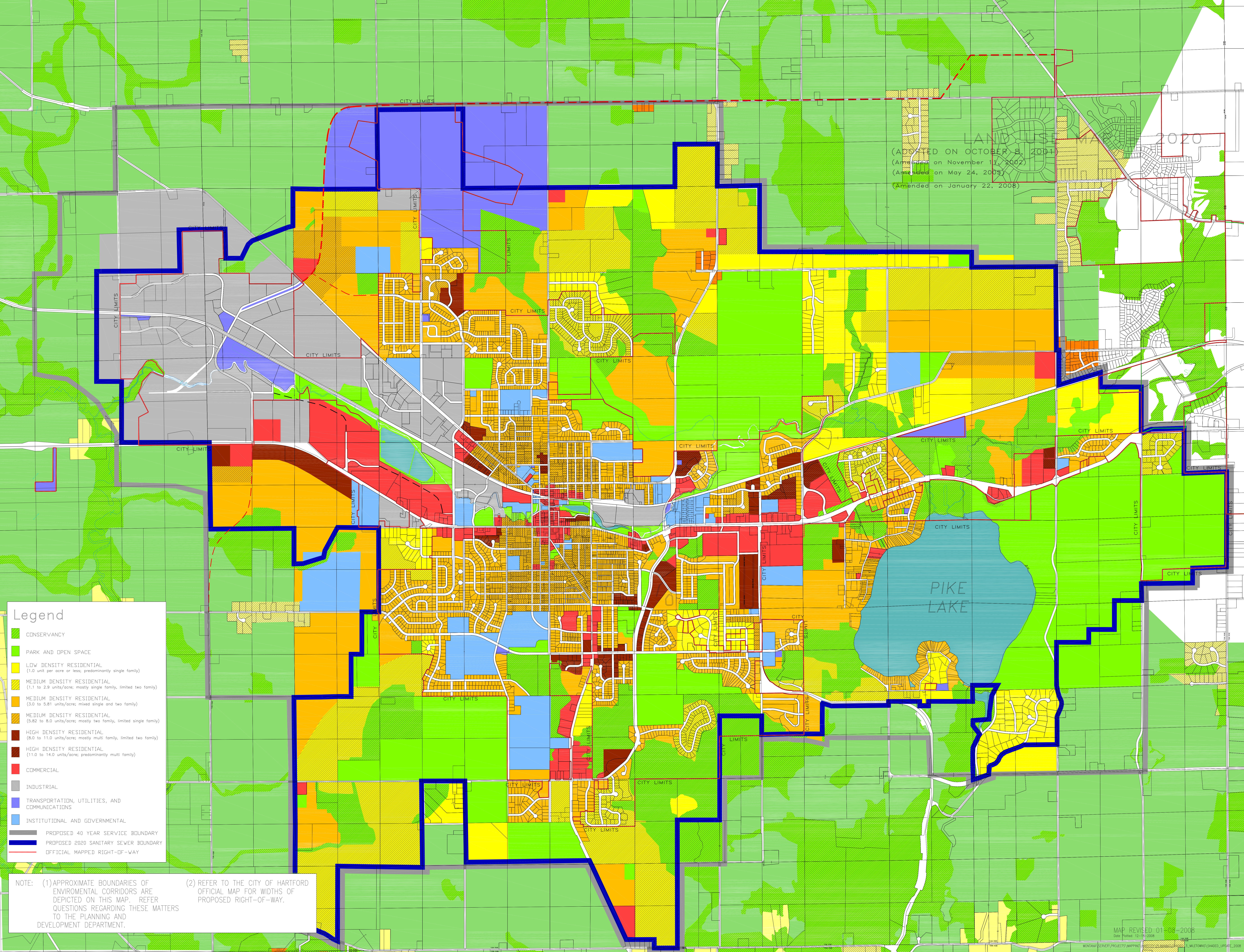


LAND USE
 (ADOPTED ON OCTOBER 8, 2004)
 (Amended on November 11, 2002)
 (Amended on May 24, 2005)
 (Amended on January 22, 2008)



Legend

- CONSERVANCY
- PARK AND OPEN SPACE
- LOW DENSITY RESIDENTIAL
(1.0 unit per acre or less; predominantly single family)
- MEDIUM DENSITY RESIDENTIAL
(1.1 to 2.9 units/acre; mostly single family, limited two family)
- MEDIUM DENSITY RESIDENTIAL
(3.0 to 5.81 units/acre; mixed single and two family)
- MEDIUM DENSITY RESIDENTIAL
(5.82 to 8.0 units/acre; mostly two family, limited single family)
- HIGH DENSITY RESIDENTIAL
(8.0 to 11.0 units/acre; mostly multi family, limited two family)
- HIGH DENSITY RESIDENTIAL
(11.0 to 14.0 units/acre; predominantly multi family)
- COMMERCIAL
- INDUSTRIAL
- TRANSPORTATION, UTILITIES, AND COMMUNICATIONS
- INSTITUTIONAL AND GOVERNMENTAL
- PROPOSED 40 YEAR SERVICE BOUNDARY
- PROPOSED 2020 SANITARY SEWER BOUNDARY
- OFFICIAL MAPPED RIGHT-OF-WAY

NOTE: (1) APPROXIMATE BOUNDARIES OF ENVIRONMENTAL CORRIDORS ARE DEPICTED ON THIS MAP. REFER QUESTIONS REGARDING THESE MATTERS TO THE PLANNING AND DEVELOPMENT DEPARTMENT.

(2) REFER TO THE CITY OF HARTFORD OFFICIAL MAP FOR WIDTHS OF PROPOSED RIGHT-OF-WAY.