


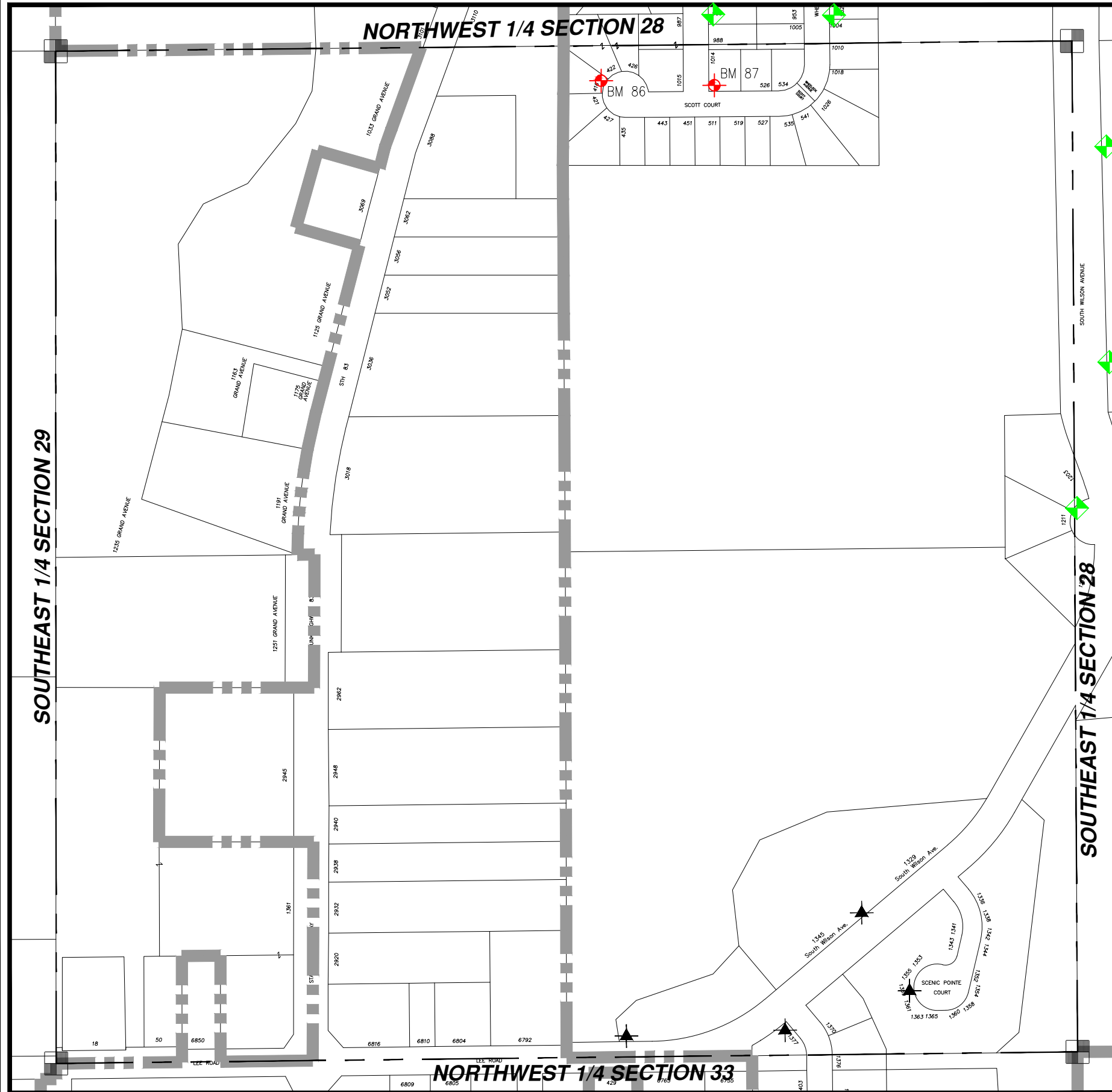




WASHINGTON COUNTY, T10 R18 SW 1/4 SECT 28

SW 28

 = Hyd. With NO Benchmark Info.
 = Existing Benchmark
 = Benchmark in Adjacent Section
 Users Should **VERIFY** all Benchmarks Information before use.



BM #	ELEV	DESCRIPTIONS
86	1013.15	F.H. S.BOLT AT ARROW POINT AT THE END OF SCOTT COURT, AT HOUSE #421
87	1010.85	F.H. N.W.BOLT W / TAG NORTH CORNER OF VAN BUREN, SCOTT AND WHELOCK