


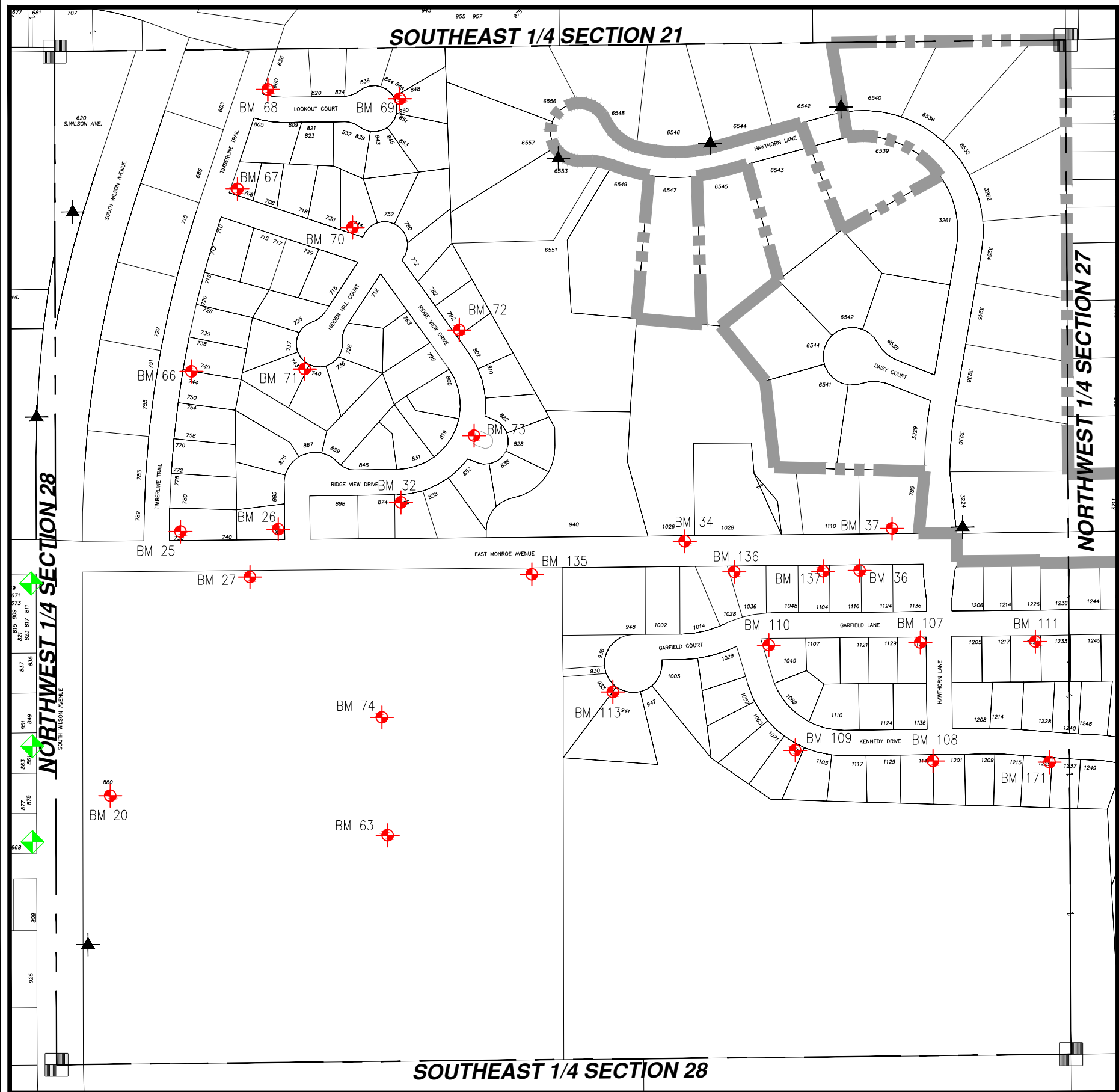


WASHINGTON COUNTY, T10 R18 NE 1/4 SECT 28

NE 28

 = Hyd. With NO Benchmark Info.
 = Existing Benchmark
 = Benchmark in Adjacent Section
 Users Should **VERIFY** all Benchmarks Information before use.



BM #	ELEV	DESCRIPTIONS
20	1000.11	FIRE HYDRANT (NW BOLT) SOUTH SIDE OF SHELTER BUILDING (INDEPENDENCE PARK)
25	995.00	FIRE HYDRANT (NE BOLT) (NE) CORNER OF TIMBERLINE AND EAST MONROE
26	995.12	FIRE HYDRANT (SE BOLT) (NW) CORNER OF EAST MONROE AND RIDGEVIEW DRIVE
27	995.07	FIRE HYDRANT (SE BOLT) SOUTH SIDE OF MONROE, SOUTH OF RIDGEVIEW DRIVE
32	999.51	FIRE HYDRANT (SE BOLT W/TAG) RIDGEVIEW DRIVE JUST EAST OF CATCH BASIN SOUTH SIDE OF ROAD
34	1030.19	RAILROAD SPIKE IN POWER POLE #2088, USE HEAD OF SPIKE (SPIKE IS 1' ABOVE THE GROUND)
36	1021.55	FH (SE BOLT PAINTED BLACK) S/S OF MONROE EAST OF ENGELKES PROPERTY, WEST OF HAWTHORNE LN ACROSS FORM HOUSE #1110 , 300' ± W. OF HAWTHORNE LN
37	1024.99	RAILROAD SPIKE 1' ABOVE THE GROUND (USE HEAD OF SPIKE) IN POWER POLE #2085
63	998.16	FIRE HYDRANT (NORTH BOLT @ POINTING ARROWHEAD) EAST SIDE OF U18 SOCCER FIELD, SOUTH SIDE OF PARKING LOT
66	994.47	FIRE HYDRANT (NE BOLT W/TAG) NORTH SIDE OF DRIVEWAY @ HOUSE #744, EAST SIDE OF TIMBERLINE TRAIL
67	992.67	FIRE HYDRANT (NW BOLT W/TAG) (NE) CORNER OF TIMBERLINE AND RIDGEVIEW DRIVE
68	994.89	FIRE HYDRANT (NE BOLT W/TAG) (NE) CORNER OF TIMBERLINE AND LOOK-OUT COURT
69	1006.80	FIRE HYDRANT (NORTH BOLT W/TAG) TOP AND END OF LOOK-OUT COURT
70	995.72	FIRE HYDRANT (NW BOLT W/TAG) ON (NW) CORNER OF RIDGEVIEW DRIVE AND HIDDEN-HILL COURT
71	996.17	FIRE HYDRANT (SOUTH BOLT) @ THE END OF HIDDEN HILL COURT
72	999.26	FIRE HYDRANT (NE BOLT W/TAG) (SE) SIDE OF HOUSE #792, NE SIDE OF RIDGEVIEW DR.
73	1002.69	FIRE HYDRANT (EAST BOLT W/ TAG) ON RIDGEVIEW DRIVE EAST SIDE OF STREET ON GRASS ISLAND ACROSS FROM HOUSE #819
74	997.49	F.H. WEST SIDE OF SOCCER FIELD PARKING LOT N.W. BOLT W / ARROW
107	1019.02	FH AT THE SW CORNER OF GARFIELD AND HAWTHORNE, E/SE BOLT[BLACK] ON UPPER FLANGE AREA [1018.95 ON UPPER FLANGE, SW BOLT BY OTHERS]
108	1007.68	FH, E/SE BOLT[BLACK] ON UPPER FLANGE, S/S OF KENNEDY AT HAWTHORN [1007.59 ON UPPER FLANGE, SW BOLT, BY OTHERS]
109	1005.18	FIRE HYDRANT, SOUTH SIDE OF KENNEDY AT HOUSE #1079, E/SE BOLT[BLACK] ON UPPER FLANGE
110	1011.03	FH AT THE SE CORNER OF KENNEDY AND GARFIELD, ON GARFIELD, E/SE BOLT[BLACK] ON UPPER FLANGE, [1010.95 ON HYDRANT BY OTHERS]
111	1031.77	FIRE HYDRANT ON THE SOUTH SIDE OF GARFIELD AT HOUSE #1225, BOLT AT ARROW POINT ON UPPER FLANGE
113	1018.30	FIRE HYDRANT, BOLT AT ARROW POINT, SOUTH SIDE OF CUL-DE-SAC AT HOUSE # 933 [1018.22 ON HYDRANT BY OTHERS]
135	1010.74	FIRE HYDRANT BOLT AT ARROWHEAD, SOUTH SIDE OF EAST MONROE, ACROSS FROM DRIVEWAY FOR #940 EAST MONROE
136	1027.26	FH, BOLT AT ARROWHEAD, S/S OF EAST MONROE, 50' S.W. OF DRIVEWAY FOR HOUSE #1028 ON N/S OF E. MONROE
137	1025.72	FIRE HYDRANT BOLT AT ARROWHEAD, SOUTH SIDE OF EAST MONROE ACROSS FROM DRIVEWAY FOR HOUSE #1110/1026
171	1011.42	FIRE HYDRANT, TOP OF BOLT ON FLANGE AT ARROW POINT, SOUTH SIDE KENNEDY DRIVE AT HOUSE #1237