

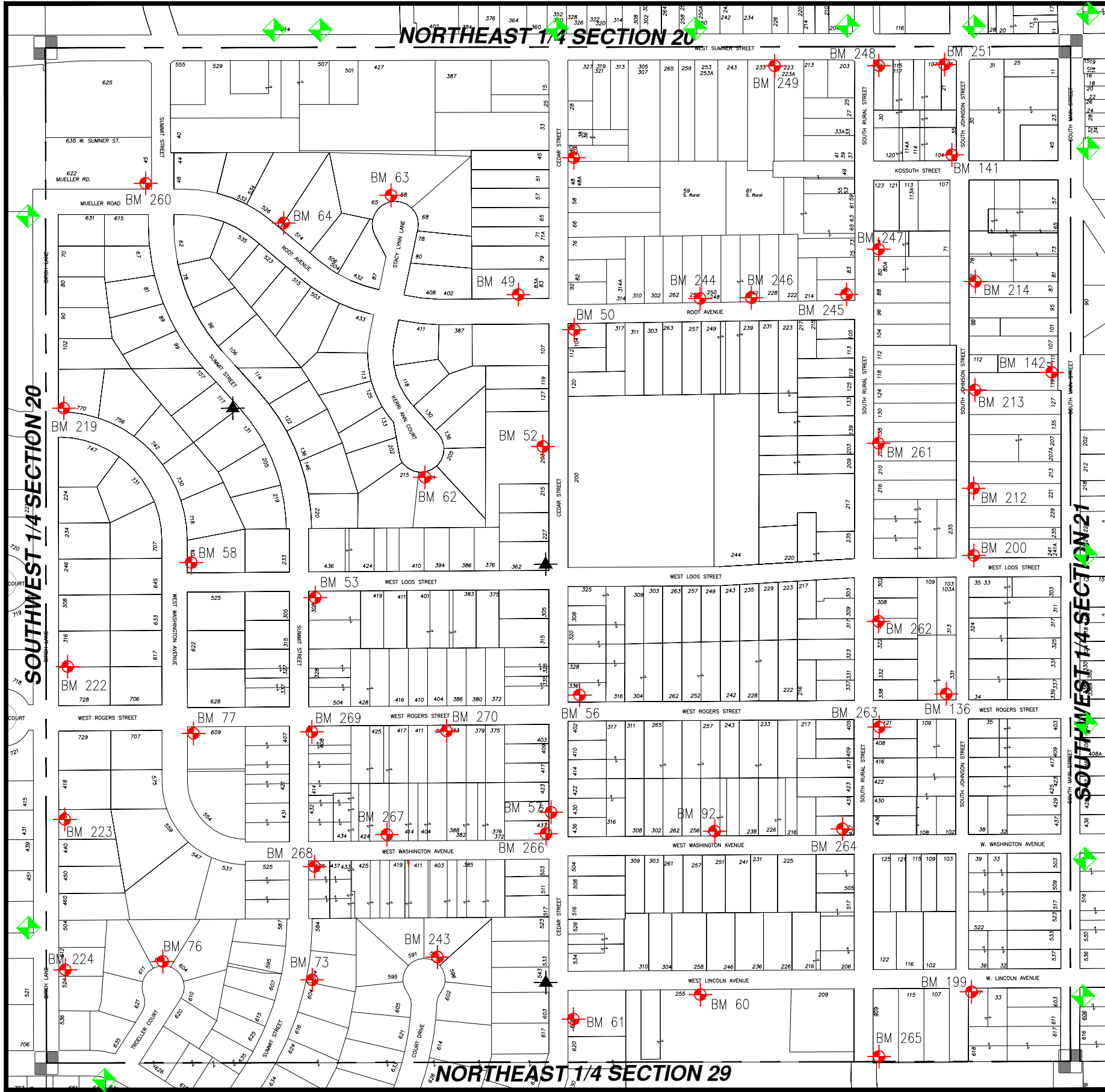


WASHINGTON COUNTY, T10 R18

SE 1/4 SECT 20

SE 20

= Hyd. With NO Benchmark Info.
 = Existing Benchmark
 = Benchmark in Adjacent Section
Users Should VERIFY all Benchmarks Information before use.



BM #	ELEV	DESCRIPTIONS
49	985.78'	FIRE HYDRANT (NW BOLT) NORTH SIDE OF ROOT AVE. 100' WEST OF CEDAR
50	989.31'	FIRE HYDRANT (SE BOLT W/TAG) (SE) CORNER ROOT AND CEDAR STREET
52	1000.29'	HEAD OF SPIKE IN POWER POLE #154 WEST SIDE OF CEDAR STREET IN FRONT OF HOUSE #203 (WITH STREET LIGHT)
53	1035.16'	FIRE HYDRANT (EAST BOLT) (SE) CORNER OF LOOS AND SUMMIT STREET
56	1018.63'	FIRE HYDRANT (TOP BOLT) (NE) CORNER RODGERS AND CEDAR STREET
57	1024.99'	HEAD OF SPIKE, EAST SIDE OF POWER POLE #162 (WITH METER) WEST SIDE CEDAR ST. IN FRONT OF HOUSE #431
58	1028.06'	FIRE HYDRANT (SOUTH BOLT) ON THE (NE) CORNER OF WEST LOOS AND WASHINGTON
60	1013.41'	FIRE HYDRANT, NE BOLT, ON SOUTH SIDE OF W. LINCOLN IN FRONT OF HOUSE #258
61	1037.36'	FIRE HYDRANT (NORTH BOLT) EAST SIDE OF CEDAR STREET NORTH BUILDING #620
62	998.24'	FIRE HYDRANT (SE BOLT) AT THE END OF KERI ANN COURT
63	972.29'	FIRE HYDRANT (SW BOLT) IN THE END OF STACEY LYNN LANE
64	975.71'	FIRE HYDRANT (SW BOLT) ON NORTH SIDE OF ROOT AVE., ACROSS FROM HOUSE #523
73	1025.40'	FIRE HYDRANT (SE BOLT W/TAG) ON EAST SIDE OF SUMMIT AND THE NORTH LOT-LINE OF HOUSE #604
76	1009.29'	FIRE HYDRANT (NW BOLT W/TAG) AT END OF TROELLER COURT IN FRONT OF HOUSE #603
77	1035.72'	FIRE HYDRANT (NORTH BOLT) ON THE (SE) CORNER OF WEST RODGERS AND WASHINGTON
92	1010.32'	FIRE HYDRANT, E. BOLT IN FRONT OF HOUSE #244 WEST WASHINGTON
136	1023.46'	FIRE HYDRANT, TOP SMALL BOLT IN CENTER OF TOP, NW CORNER OF SOUTH JOHNSON AND WEST ROGERS ON WEST ROGERS
141	984.83'	FIRE HYDRANT, BOLT AT ARROWHEAD, NW CORNER OF KOSSUTH AND SOUTH JOHNSON ON KOSSUTH
142	1010.88'	FIRE HYDRANT, NW BOLT WITH TAG, WEST SIDE OF SOUTH MAIN AT 113/111
146	1006.08'	TOP OF BRASS CAP SECTION CORNER MONUMENT, SE CORNER OF SECTION 20, IN SOUTH MAIN AT #617
199	1008.68'	FIRE HYDRANT, SW BOLT @ ARROWHEAD, (SE) CORNER OF S. JOHNSON & W. LINCOLN
200	1014.12'	FIRE HYDRANT, NW BOLT W/ TAG, NE CORNER OF S. JOHNSON & W. LOOS
212	1003.27'	FIRE HYDRANT, NE BOLT W/TAG, EAST SIDE OF S. JOHNSON, AT #221
213	1000.11'	FIRE HYDRANT, NE BOLT W/TAG, EAST SIDE OF S. JOHNSON, AT #207
214	994.27'	FIRE HYDRANT, NE BOLT W/TAG, EAST SIDE OF S. JOHNSON AT #82
219	1004.23'	FIRE HYDRANT, S. BOLT ON NE. COR. OF BIRCH LANE AND W. WASHINGTON AVENUE
222	1035.11'	FIRE HYDRANT, TOP BOLT, E. SIDE BIRCH LANE @ S. LOT LINE OF HSE #316
223	1024.66'	FIRE HYDRANT, SE. BOLT NO TAG, E. SIDE BIRCH LANE HSE #418 - #430
224	1003.70'	FIRE HYDRANT, NE. BOLT W/TAG, E. SIDE BIRCH LANE HSE #512 - #524
243	1044.04'	FIRE HYDRANT, TOP BOLT, N. END COURT DRIVE @ HSE. #591
244	989.79'	FIRE HYDRANT, NW. BOLT W/TAG, N. SIDE ROOT AVENUE @HSE. #254
245	997.22'	FIRE HYDRANT, NW. BOLT W/TAG, NW. COR ROOT AVENUE AND S. RURAL STREET @ HSE. #91
246	990.53'	FIRE HYDRANT, NE. BOLT W/TAG, N. SIDE ROOT AVENUE @ HSE. #242
247	1002.27'	FIRE HYDRANT, NE. BOLT W/TAG, E. SIDE S. RURAL STREET HSE #74
248	978.19'	FIRE HYDRANT, NE. BOLT W/TAG, SE. COR. S. RURAL STREET AND W. SUMNER STREET (S.T.H. 60)
249	981.38'	FIRE HYDRANT, SE. BOLT W/TAG, S. SIDE W. SUMNER STREET (S.T.H. 60) @ HSE. #233
251	973.52'	FIRE HYDRANT, SE. BOLT W/TAG, SW. COR. W. SUMNER STREET (S.T.H. 60) AND S. JOHNSON STREET
260	975.22'	FIRE HYDRANT, NW BOLT NO TAG, NW CORNER ROOT AVENUE & SUMMIT STREET
261	1001.03'	FIRE HYDRANT, NE BOLT W/ EXT. TAG, E/S S.RURAL STREET, @ HOUSE #138
262	1029.99'	FIRE HYDRANT, NE BOLT W/ TAG, E/S S.RURAL STREET, @ HOUSE #308
263	1022.70'	FIRE HYDRANT, NE BOLT W/ TAG, SE CORNER S.RURAL STREET & W.ROGERS STREET
264	1010.10'	FIRE HYDRANT, NW BOLT W/ TAG, NW CORNER S.RURAL STREET & W.WASHINGTON AVENUE
265	1008.65'	FIRE HYDRANT, NE BOLT @ ARROW, E/S S.RURAL STREET, 150'+/- SOUTH OF W.LINCOLN AVENUE, @ P.P.#091221
266	1026.87'	FIRE HYDRANT, SW BOLT W/ TAG, NW CORNER CEDAR STREET & W.WASHINGTON AVENUE
267	1046.59'	FIRE HYDRANT, SW BOLT W/ TAG, N/S W.WASHINGTON AVENUE, @ HOUSE #414
268	1040.38'	FIRE HYDRANT, SW BOLT W/ TAG, SE CORNER SUMMIT STREET & W.WASHINGTON AVENUE
269	1039.78'	FIRE HYDRANT, NE BOLT @ ARROW, SE CORNER SUMMIT STREET & W. ROGERS STREET
270	1031.31'	FIRE HYDRANT, N BOLT @ ARROW, S/S W.ROGERS STREET, @ HOUSE #383