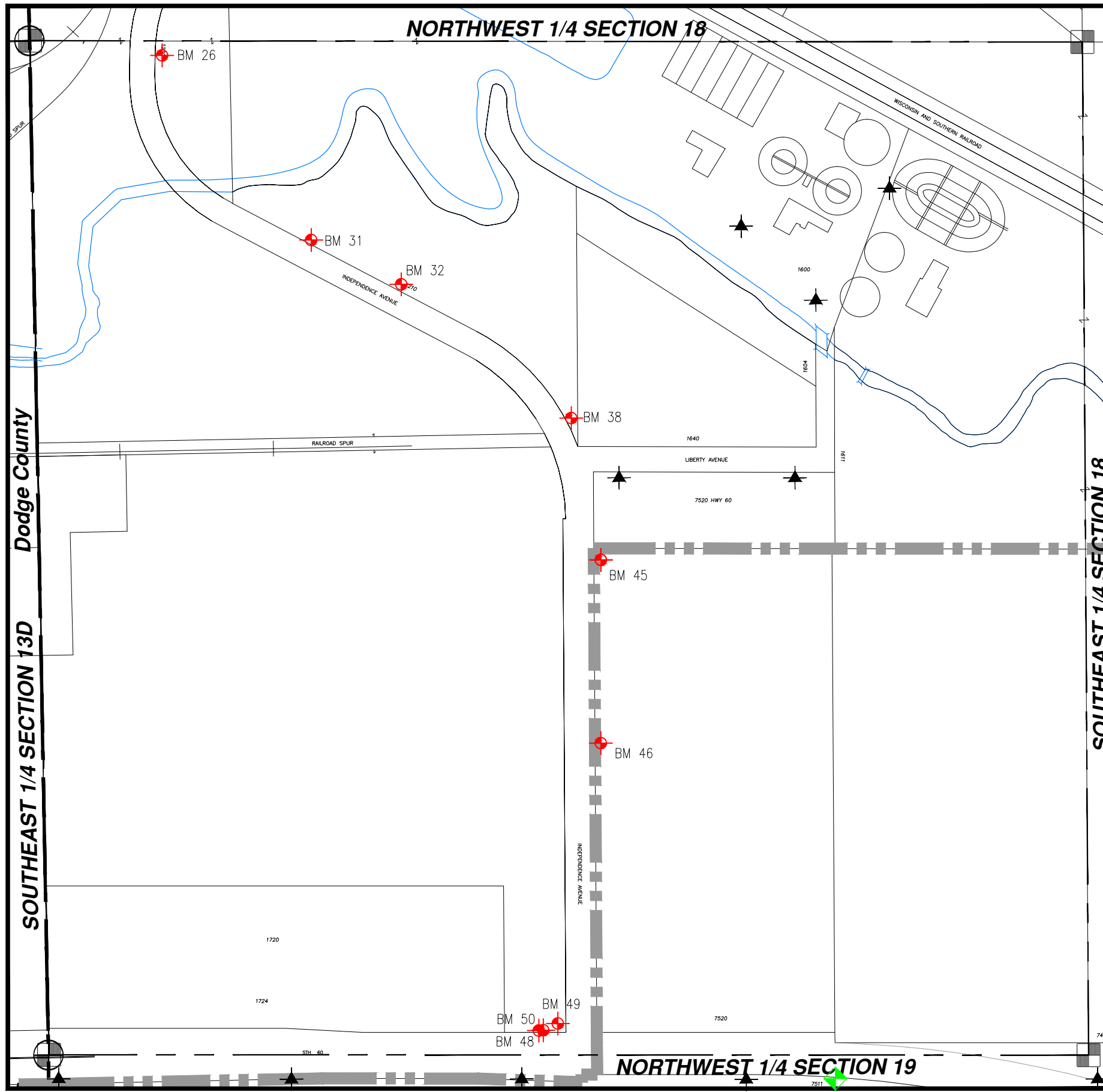




WASHINGTON COUNTY, T10 R18 SW 1/4 SECT 18

SW 18

= Hyd. With NO Benchmark Info.
 = Existing Benchmark
 = Benchmark in Adjacent Section
 Users Should **VERIFY** all Benchmarks Information before use.



| BM # | ELEV | DESCRIPTIONS |
|------|--------|--|
| 26 | 965.7 | FIRE HYDRANT (NE BOLT W/TAG) EAST SIDE OF INDEPENDENCE AVE., 200' (+ OR -) NORTH OF THE RIVER |
| 31 | 963.23 | FIRE HYDRANT (NW BOLT W/TAG) 300' (NW) OF B.M.#32 ON NORTH SIDE OF ROAD |
| 32 | 964.32 | FIRE HYDRANT (NW BOLT W/ TAG) NORTH SIDE OF INDEPENDENCE AVE.(SIDE SHOT) |
| 38 | 968.37 | FIRE HYDRANT (NE BOLT W/TAG) APPROX. 50' NORTH OF CORNER AT INDEPENDENCE AVE. AND LIBERTY AVE. |
| 45 | 975.14 | FIRE HYDRANT (NE BOLT W/TAG) FIRST FIRE HYDRANT SOUTH SIDE LIBERTY AVE. EAST SIDE OF INDEPENDENCE AVE |
| 46 | 981.43 | FIRE HYDRANT (NE BOLT W/TAG) APPROX. 500' NORTH OF STH "60" ON EAST SIDE OF INDEPENDENCE AVE. |
| 48 | 981.38 | POWER POLE #63-8955 ABOVE RAILROAD SPIKE FROM B.M.#47, DOUBLE HEADED NAIL |
| 49 | 989.31 | FIRE HYDRANT (NW BOLT) (NW) CORNER OF STH"60" AND INDEPENDENCE AVE. |
| 50 | 980.98 | NEAR BOTTOM OF POWER POLE #63-8955 SOUTH SIDE OF POLE, RAILROAD SPIKE, 150' (+ OR -) WEST OF INDEPENDENCE AVE. |