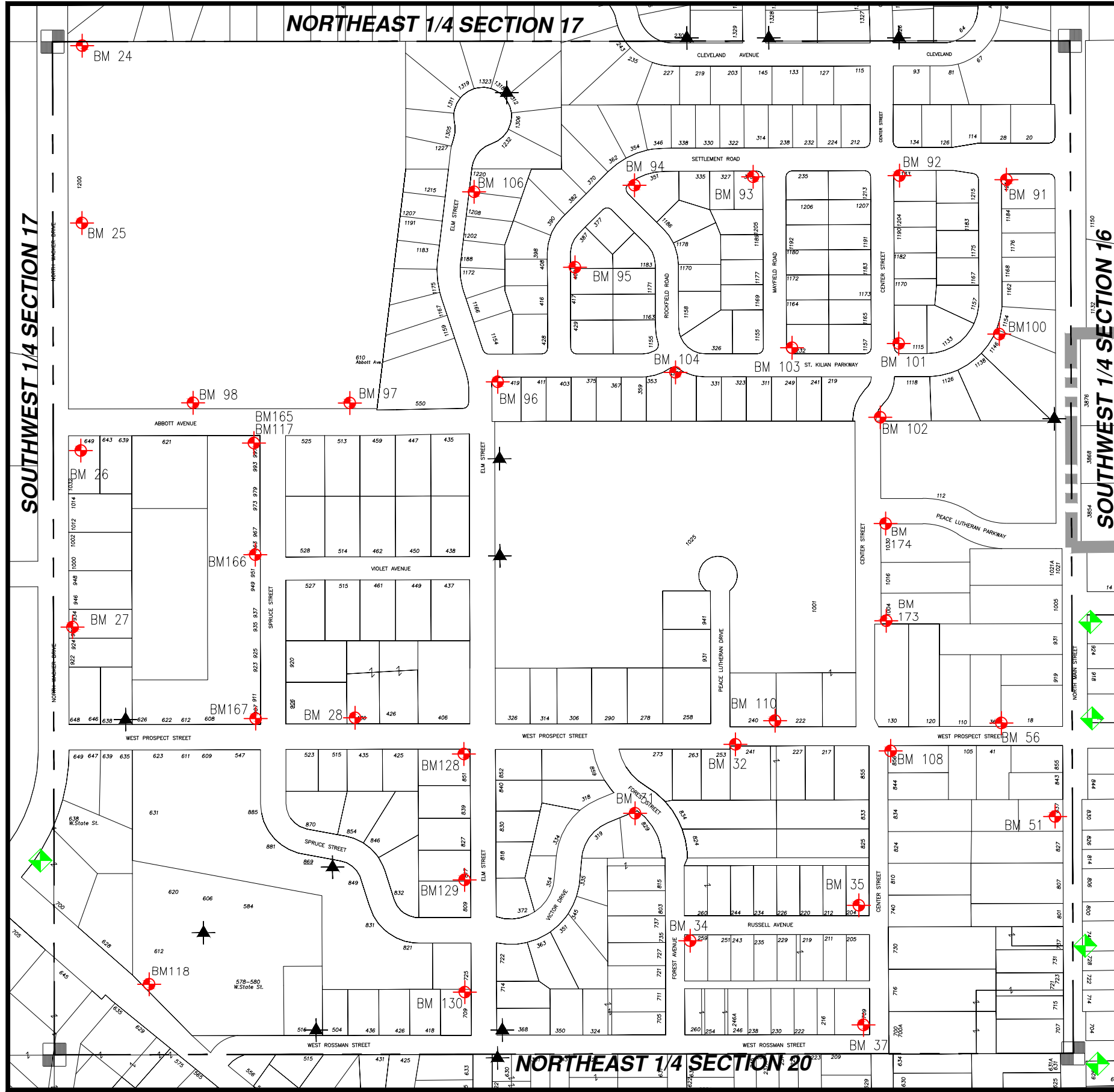




# WASHINGTON COUNTY, T10 R18 SE 1/4 SECT 17

# SE 17

= Hyd. With NO Benchmark Info.  
 = Existing Benchmark  
 = Benchmark in Adjacent Section  
**Users Should VERIFY all Benchmarks Information before use.**



BM #	ELEV	DESCRIPTIONS
24	1021.44	FIRE HYDRANT (N BOLT) (NW) CORNER OF WOODLAWN UNION PARK, EAST SIDE OF WACKER DRIVE
25	1000.12	FIRE HYDRANT (NORTH BOLT) SOUTH OF NORTH DRIVEWAY OF WOODLAWN PARK EAST SIDE OF WACKER DRIVE
26	986.38	FIRE HYDRANT (NORTH BOLT) (SE) CORNER OF WACKER DRIVE AND ABBOTT
27	981.40	FIRE HYDRANT (NORTH BOLT) EAST SIDE OF WACKER BETWEEN MADISON AND PROSPECT
28	997.06	FIRE HYDRANT (NW BOLT) AT THE END OF PROSPECT STREET ON NORTH SIDE WEST OF ELM (SIDE SHOT)
31	1021.33	FIRE HYDRANT (EAST BOLT) (SW) CORNER OF FOREST AND VICTOR DRIVE
32	1038.44	FIRE HYDRANT (SOUTH BOLT) (SE) OF (NE) CORNER OF PROSPECT STREET AND PEACE LUTHERAN DRIVE
34	1034.27	FIRE HYDRANT (NE BOLT) (SE) CORNER OF RUSSEL AVE. AND FOREST
35	1037.68	FIRE HYDRANT (NW BOLT) (NW) CORNER OF CENTER STREET AND RUSSEL AVE. SIDE SHOT
37	1037.40	FIRE HYDRANT (SW BOLT) (NW) CORNER OF CENTER AND ROSSMAN STREET
51	1016.13	UTILITY POLE ON THE WEST SIDE OF MAIN ST. AT HOUSE# 837, R/R SPIKE ON EAST SIDE OF POLE, 1' ABOVE GROUND.
56	1017.93	R/R SPIKE IN S/S UTILITY POLE #1557 (1' ABOVE GROUND) AT EAST LOT LINE TO HOUSE #36 W. PROSPECT, N/S OF W. PROSPECT
91	1020.00	FIRE HYDRANT, NE BOLT WITH TAG, SE CORNER OF SETTLEMENT ROAD AND ST. KILIAN PARKWAY [1018.06 NW BOLT BY OTHERS]
92	1024.83	FIRE HYDRANT, SE BOLT WITH TAG, SE CORNER OF SETTLEMENT ROAD AND CENTER STREET [1023.87 BY OTHERS]
93	1020.58	FIRE HYDRANT, SE BOLT WITH TAG [1019.61 BY OTHERS] SW CORNER OF SETTLEMENT ROAD AND MAYFIELD ROAD
94	1017.93	FIRE HYDRANT, SE BOLT WITH TAG [1016.36 BY OTHERS] SE CORNER OF SETTLEMENT ROAD AND ROCKFIELD ROAD
95	1019.00	FIRE HYDRANT, NE BOLT WITH TAG, EAST SIDE OF SETTLEMENT ROAD, 300'+ - SW OF BM 94
96	1009.17	FIRE HYDRANT, SE BOLT WITH TAG, SE CORNER OF ELM STREET AND ST. KILIAN PARKWAY, ON ST. KILIAN PARKWAY, (2' EXTENSION AND LOCATION FLAG ADDED - OLD ELEVATION WAS 1007.15)
97	995.73	FIRE HYDRANT, WEST BOLT WITH TAG, ON ABBOTT AVE. 300'± WEST OF ELM STREET, NEAR EAST PROP LINE TO WOODLAWN PARK
98	989.57	FIRE HYDRANT, NE BOLT AT ARROWHEAD ON FLANGE, NORTH SIDE OF ABBOTT AVE., NE OF V.F.W. BUILDING, 100' ±, EAST OF WOODLAWN PARK PARKING LOT [989.80 NW BOLT BY OTHERS]
100	1033.40	FIRE HYDRANT, NE BOLT WITH TAG, E/S ST. KILIAN PARKWAY @ N LOT LINE OF HOUSE #1146
101	1029.87	FIRE HYDRANT, SW BOLT AT ARROWHEAD, NE CORNER OF ST.KILIAN PARKWAY AND CENTER STREET
102	1027.25	FIRE HYDRANT, NW BOLT, E/S CENTER STREET @ SW LOT CORNER OF HOUSE #1118 ST. KILIAN PARKWAY
103	1023.17	FIRE HYDRANT, NW BOLT AT ARROWHEAD, NE CORNER OF MAYFIELD ROAD AND ST. KILIAN PARKWAY, @ HOUSE #232 ST. KILIAN
104	1024.01	FIRE HYDRANT, NE BOLT AT ARROWHEAD, S/S OF ST. KILIAN PARKWAY @ ROCKFIELD ROAD EXTENDED SOUTH
106	1012.11	FIRE HYDRANT, SW BOLT AT ARROWHEAD, E/S ELM STREET @ DEAD END NORTH, @ NORTH LOT LINE OF HSE #1220
108	1029.37	FIRE HYDRANT, BOLT AT ARROWHEAD, SE CORNER OF W. PROSPECT & CENTER STREET
110	1038.53	FIRE HYDRANT, SE BOLT AT ARROWHEAD, N/S W.PROSPECT BETWEEN HSE #222 & HSE #240
117	991.05	FIRE HYDRANT, WEST SIDE SPRUCE STREET AT ABBOTT, SW BOLT W/TAG
118	977.00	FIRE HYDRANT,NW BOLT W/TAG, NORTH SIDE OF STATE STREET, 50' WEST OF AND ACROSS FROM BLACKS(#629)
128	1009.21	FIRE HYDRANT, SW BOLT W/TAG, W/S ELM STREET @ HSE #851
129	1004.91	FIRE HYDRANT, SW BOLT W/TAG, W/S ELM STREET @ HSE #817
130	1001.51	FIRE HYDRANT, SW BOLT W/TAG, W/S ELM STREET @ HSE #709
165	992.11	FIRE HYDRANT, TOP NUT, SW COR. ABBOTT AVE. & SPRUCE ST., SEE BM117 991.05 SW BOLT W/ TAG
166	998.82	FH, TOP NUT, W/S SPRUCE STREET, @ SPRUCE ST. & VIOLET AVE.
167	987.61	FIRE HYDRANT, TOP NUT, NW COR. SPRUCE ST. & W. PROSPECT ST.
173	1030.73	FIRE HYDRANT, NE BOLT W/TAG, EAST SIDE OF CENTER ST., 200' +- N. OF W. PROSPECT
174	1028.90	FIRE HYDRANT, NE BOLT W/TAG, SE CORNER OF CENTER ST. AND PEACE LUTHERAN PARKWAY ON CENTER ST.