



WASHINGTON COUNTY, T10 R18 NW 1/4 SECT 17

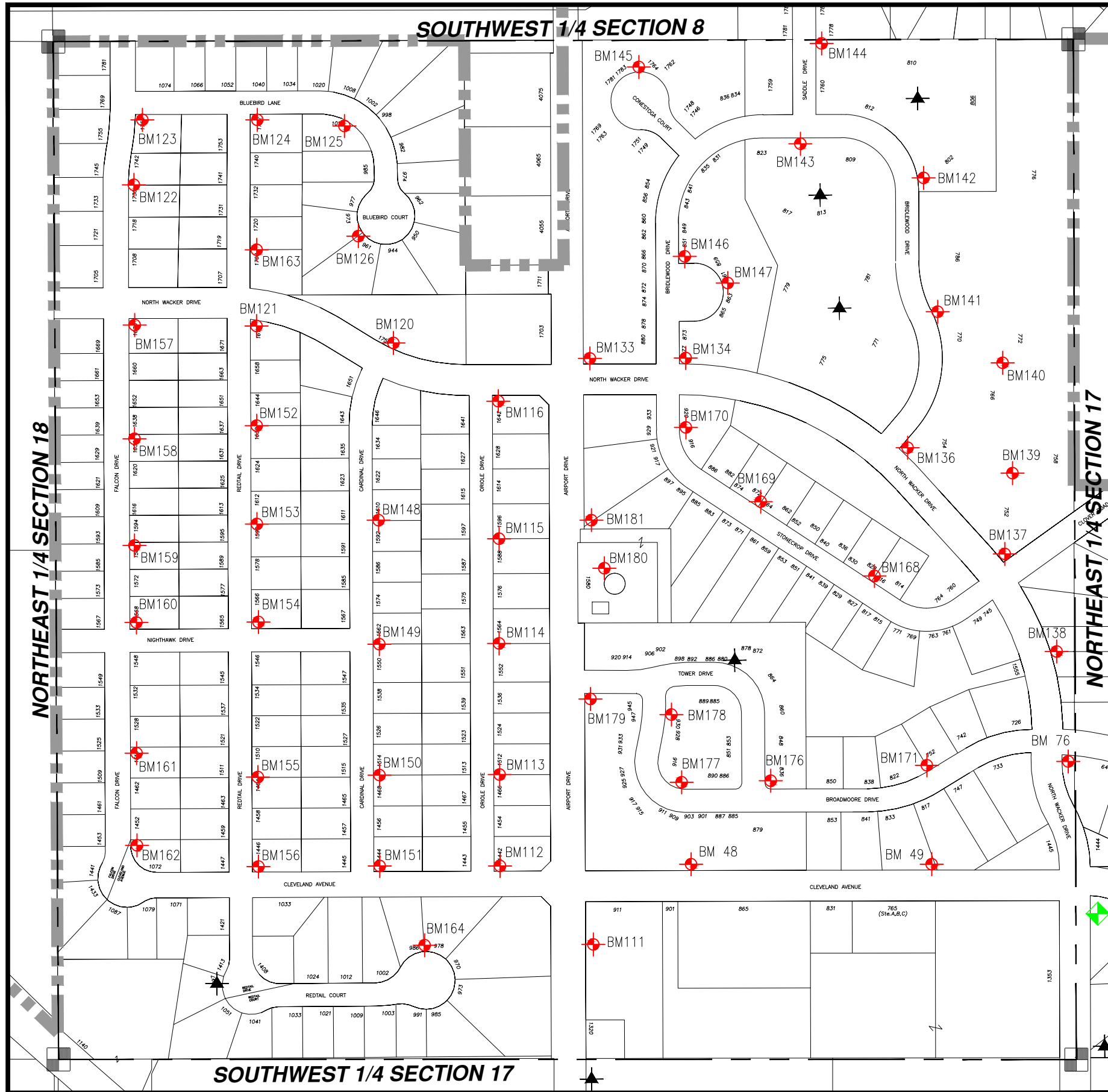
📍 = Hyd. With NO Benchmark Info.

🟩 = Benchmark in Adjacent Section

**NW
17**

📍 = Existing Benchmark

Users Should VERIFY all Benchmarks
Information before use.



BM #	ELEV	DESCRIPTIONS
48	1036.85	FH (SE BOLT) N/S OF CLEVELAND AVE. OPPOSITE WEST ENTRANCE TO "STEEL CRAFT CORPORATION"
49	1031.05	FH (SE BOLT) N/S OF CLEVELAND AVE. ACROSS FROM "DAVE'S JOB SHOP -- MACHINING DIVISION"
76	1033.14	FH, BOLT ON FLANGE AT POINT OF ARROW, E/S OF WACKER, SE CORNER OF BROADMOORE AND WACKER
111	1021.74	FIRE HYDRANT, NE BOLT W/ TAG, EAST SIDE OF C.T.H. U, 100'+/- SOUTH OF CLEVELAND AVE.
112	1026.64	FH, N BOLT AT ARROWHEAD, N/S OF CLEVELAND AVE., NE COR. OF CLEVELAND AND ORIOLE DR., S/S #1442 ORIOLE
113	1036.86	FIRE HYDRANT, BOLT AT ARROWHEAD, EAST SIDE ORIOLE DRIVE, N/S #1466 ORIOLE (1036.77 N. BOLT BY OTHERS)
114	1054.53	FIRE HYDRANT, SE BOLT AT ARROWHEAD, EAST SIDE ORIOLE DRIVE, S/S #1564 ORIOLE
115	1058.31	FIRE HYDRANT, SE BOLT AT ARROWHEAD, EAST SIDE ORIOLE DRIVE, S/S #1596 ORIOLE
116	1056.23	FIRE HYDRANT, SE BOLT AT ARROWHEAD, SE CORNER OF ORIOLE AND WACKER DR. (1056.09 BY OTHERS 46/34)
120	1060.04	FIRE HYDRANT, S. BOLT @ ARROWHEAD, N/S N. WACKER @ CARDINAL DRIVE EXT.
121	1055.18	FIRE HYDRANT, BOLT @ ARROWHEAD, SE CORNER REDTAIL AND WACKER
122	1047.22	FIRE HYDRANT, NE BOLT W/ TAG, E/S FALCON @ HSE #1730
123	1045.58	FIRE HYDRANT, SE BOLT W/TAG, SE CORNER BLUEBIRD AND FALCON
124	1048.82	FIRE HYDRANT, SE BOLT W/TAG, SE CORNER BLUEBIRD AND REDTAIL
125	1047.29	FIRE HYDRANT, SE BOLT W/TAG, S/S OF BLUEBIRD, E. OF HOUSE #1011
126	1051.89	FIRE HYDRANT, S. BOLT W/ TAG, S/S OF BLUEBIRD CUL-DE-SAC @ HOUSE #961
133	1050.86	FIRE HYDRANT, NW BOLT W/ TAG, NE COR. AIRPORT DRIVE & N. WACKER DRIVE ON N. WACKER DRIVE
134	1041.99	FH, NE BOLT W/ TAG, NE COR. OF N. WACKER DR. & WEST BRIDLEWOOD DR. ON WEST BRIDLEWOOD DR.
136	1028.19	FH, NE BOLT W/ TAG, NE COR. EAST BRIDLEWOOD DR. AND N. WACKER DR. ON EAST BRIDLEWOOD DR.
137	1028.92	FIRE HYDRANT, NW BOLT W/TAG, NW COR. N. WACKER AND CLOVER RD. ON N. WACKER
138	1031.77	FIRE HYDRANT, NW BOLT W/ TAG, E/S N. WACKER DRIVE, 250'+/- S OF CLOVER ROAD, ACROSS FROM LT. POLE
139	1027.92	FIRE HYDRANT, NW BOLT W/ TAG, 200'+/- NORTH OF BM137
140	1027.01	FIRE HYDRANT, NE BOLT W/ TAG, @ SE COR. BLDG. #770 BRIDLEWOOD DRIVE
141	1025.51	FIRE HYDRANT, NE BOLT W/ TAG, E/S BRIDLEWOOD DRIVE NEAR DRIVEWAY @ #770
142	1026.61	FIRE HYDRANT, NE BOLT W/ TAG, EAST BRIDLEWOOD DRIVE, E/S ROAD, NORTH OF CLUBHOUSE
143	1027.55	FIRE HYDRANT, SE BOLT W/ TAG, S/S OF NORTH BRIDLEWOOD, @ BLDG. #837, S OF SADDLE DRIVE EXT. SOUTH
144	1027.92	FIRE HYDRANT, NE BOLT W/ TAG, E/S SADDLE DRIVE, 200'+/- NORTH OF BRIDLEWOOD DRIVE
145	1030.38	FIRE HYDRANT, NW BOLT W/TAG, NORTH END OF CONESTOGA COURT
146	1035.08	FIRE HYDRANT, NE BOLT W/ TAG, @ NE COR. OF EYEBROW CUL-DE-SAC ON WEST BRIDLEWOOD DRIVE
147	1034.68	FIRE HYDRANT, NE BOLT W/ TAG, E/S OF EYEBROW CUL-DE-SAC, WEST BRIDLEWOOD DRIVE
148	1050.29	FIRE HYDRANT, SOUTH BOLT AT ARROW, E/S OF CARDINAL DR. @ HSE #1610
149	1042.9	FIRE HYDRANT, EAST BOLT AT ARROW, E/S OF CARDINAL DR. @ HSE #1562
150	1034.3	FIRE HYDRANT, EAST BOLT AT ARROW, E/S CARDINAL DR. @ HSE #1468
151	1027.33	FIRE HYDRANT, NORTH BOLT AT ARROW, CARDINAL DR. @ HSE #1444, N OF CLEVELAND AVE.
152	1049.76	FIRE HYDRANT, EAST BOLT AT ARROW, E/S OF REDTAIL @ HSE #1632
153	1044.39	FIRE HYDRANT, SOUTH BOLT AT ARROW, E/S REDTAIL DR. @ HSE #1590
154	1038.53	FIRE HYDRANT, NORTH BOLT AT ARROW, NE COR. OF REDTAIL DR. & NIGHTHAWK DR. ON NIGHTHAWK
155	1033.2	FIRE HYDRANT, EAST BOLT AT ARROW, E/S REDTAIL DR. @ HSE #1464
156	1028.8	FIRE HYDRANT, NORTH BOLT AT ARROW, NE COR. OF REDTAIL DR. & CLEVELAND AVE. ON CLEVELAND
157	1041.72	FIRE HYDRANT, EAST BOLT AT ARROW, E/S FALCON DR. @ HSE #1670, S OF N. WACKER
158	1037.44	FIRE HYDRANT, SOUTH BOLT AT ARROW, E/S FALCON DR. @ HSE #1638
159	1033.31	FIRE HYDRANT, EAST BOLT AT ARROW, E/S FALCON DR. @ HSE #1594
160	1034.92	FIRE HYDRANT, NORTH BOLT AT ARROW, NE COR. FALCON DR. & NIGHTHAWK DR. ON NIGHTHAWK
161	1033.34	FIRE HYDRANT, EAST BOLT AT ARROW, E/S FALCON DR. @ HSE #1528
162	1031.68	FIRE HYDRANT, EAST BOLT AT ARROW, E/S FALCON DR. @ HSE #1452
163	1056.97	FIRE HYDRANT, NE BOLT AT ARROW, N/S REDTAIL DR. @ HSE #1720
164	1028.54	FIRE HYDRANT, EAST BOLT AT ARROW, N/S REDTAIL COURT @ HSE #978
168	1033.82	FIRE HYDRANT, BOLT W/TAG, 816 STONECROP DR.
169	1037.12	FIRE HYDRANT, BOLT W/TAG, 864 STONECROP DR.
170	1043.32	FIRE HYDRANT, BOLT W/TAG, 916 STONECROP DR.
171	1033.34	FIRE HYDRANT, BOLT W/TAG, 752 BROADMOORE DR.
176	1043.58'	FIRE HYDRANT, BOLT @ARROWHEAD, AT #836 TOWER DR.
177	1047.91'	FIRE HYDRANT, BOLT @ARROWHEAD, AT #916 BROADMOORE, SO. OF BUILDING
178	1054.79	FIRE HYDRANT, BOLT @ ARROWHEAD, EAST SIDE OF BROADMOORE AT #930
179	1058.35'	FIRE HYDRANT, BOLT @ ARROWHEAD, AT S.E. COR. OF AIRPORT DR. AND TOWER DR.
180	1057.34'	FIRE HYDRANT, NO TAG, S.E. BOLT AT WELL HOUSE #1580 AIRPORT DR.(CTH "U")
181	1055.77'	FIRE HYDRANT, N.E. BOLT W/TAG, ON AIRPORT DR.(CTH "U") 150' N. OF BM 180