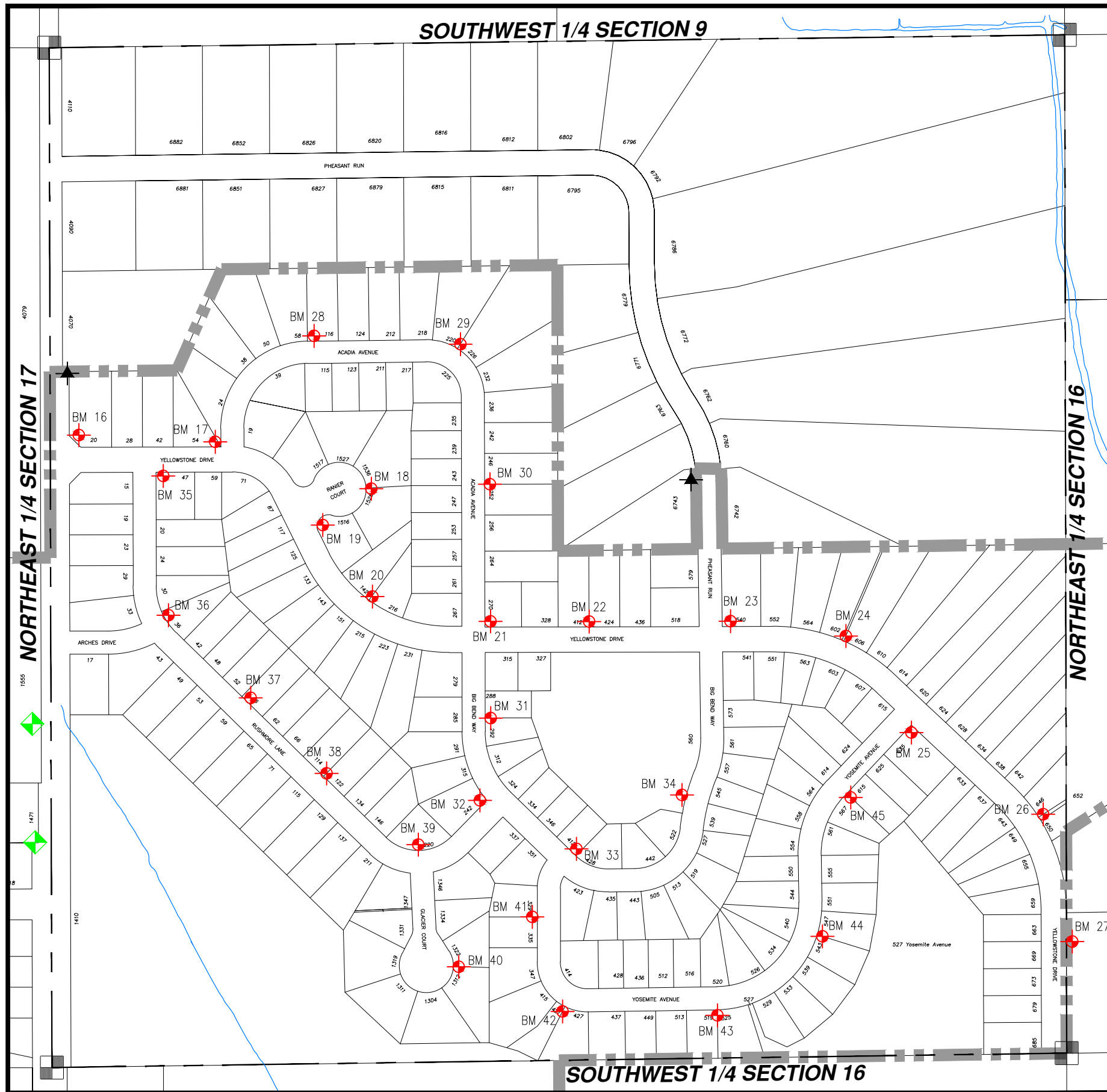




WASHINGTON COUNTY, T10 R18 NW 1/4 SECT 16

NW 16

= Hyd. With NO Benchmark Info.
 = Existing Benchmark
 = Benchmark in Adjacent Section
 Users Should **VERIFY** all Benchmarks Information before use.



BM #	ELEV	DESCRIPTIONS
16	1017.01	FIRE HYDRANT, NW BOLT, NE COR. N.MAIN & YELLOWSTONE DR.
17	1031.88	FIRE HYDRANT, NW BOLT, NW COR. YELLOWSTONE DR. & ACADIA AVE., SW LOT COR. HSE #54
18	1038.41	FIRE HYDRANT, NW BOLT, END OF RAINIER COURT CUL'D'SAC
19	1030.52	FIRE HYDRANT, NW BOLT, SE COR. YELLOWSTONE DR. & RAINIER COURT
20	1028.17	FIRE HYDRANT, NW BOLT, N/S YELLOWSTONE DR., BETWEEN HSE #142 & HSE #216
21	1033.43	FIRE HYDRANT, NW BOLT, NE COR. YELLOWSTONE DR. & ACADIA AVE., SW LOT COR. HSE #270 ACADIA AVE.
22	1038.52	FIRE HYDRANT, NW BOLT, N/S YELLOWSTONE DR., BETWEEN HSE # 424 & HSE #412
23	1041.79	FIRE HYDRANT, NW BOLT, NE COR. YELLOWSTONE DR. & PHEASANT RUN
24	1037.85	FIRE HYDRANT, NW BOLT, N/S YELLOWSTONE DR., BETWEEN HSE #602 & HSE #606
25	1039.23	FIRE HYDRANT, NW BOLT, SE COR. YELLOWSTONE DR. & YOSEMITE AVE., NW LOT COR. HSE # 635 YOSEMITE AVE.
26	1039.61	FIRE HYDRANT, NW BOLT, ON YELLOWSTONE DRIVE, BETWEEN HSE #646 & #650 OUTLOT 2
27	1037.78	FIRE HYDRANT, NW BOLT, E/S YELLOWSTONE DR., ACROSS FROM HSE #659
28	1047.04	FIRE HYDRANT, NW BOLT, N/S ACADIA AVE., BETWEEN HSE # 58 & HSE #116
29	1049.51	FIRE HYDRANT, NW BOLT, N/S ACADIA AVE., BETWEEN HSE #220 & HSE #226
30	1041.18	FIRE HYDRANT, NW BOLT, E/S ACADIA AVE., BETWEEN HSE #246 & HSE #252
31	1026.24	FIRE HYDRANT, NW BOLT, E/S BIG BEND WAY, BETWEEN HSE #288 & HSE #292
32	1021.19	FIRE HYDRANT, NW BOLT, NW COR. RUSHMORE LANE & BIG BEND WAY, @ E. LOT COR. HSE #323 BIG BEND WAY
33	1022.9	FIRE HYDRANT, NW BOLT, N/S BIG BEND WAY, BETWEEN HSE # 412 & HSE #428
34	1036.85	FIRE HYDRANT, NW BOLT, W/S BIG BEND WAY, ACROSS FROM HSE #539
35	1025.7	FIRE HYDRANT, NW BOLT, SE COR. YELLOWSTONE DR. & RUSHMORE LANE
36	1019.94	FIRE HYDRANT, NW BOLT, E/S RUSHMORE LANE, BETWEEN HSE #30 & HSE #36
37	1022.54	FIRE HYDRANT, NW BOLT, E/S RUSHMORE LANE, BETWEEN HSE #52 & HSE #56
38	1022.25	FIRE HYDRANT, NW BOLT, E/S RUSHMORE LANE, BETWEEN HSE #114 & HSE #122
39	1019.2	N/S RUSHMORE LANE @ GLACIER CT. EXTENDED N, HSE #220
40	1014.3	E/S GLACIER COURT, BETWEEN HSE #1322 & HSE #1312
41	1020.26	FIRE HYDRANT, NW BOLT, W/S YOSEMITE AVE., BETWEEN HSE #329 & HSE #335
42	1017.32	FIRE HYDRANT, NW BOLT, S/S YOSEMITE AVE., BETWEEN HSE #427 & HSE #437
43	1034.59	FIRE HYDRANT, NW BOLT, S/S YOSEMITE AVE., BETWEEN HSE #519 & HSE #525
44	1035.14	FIRE HYDRANT, NW BOLT, E/S YOSEMITE AVE., BETWEEN HSE #543 & HSE #547
45	1037.2	FIRE HYDRANT, NW BOLT, E/S YOSEMITE AVE., BETWEEN HSE #567 & HSE #615