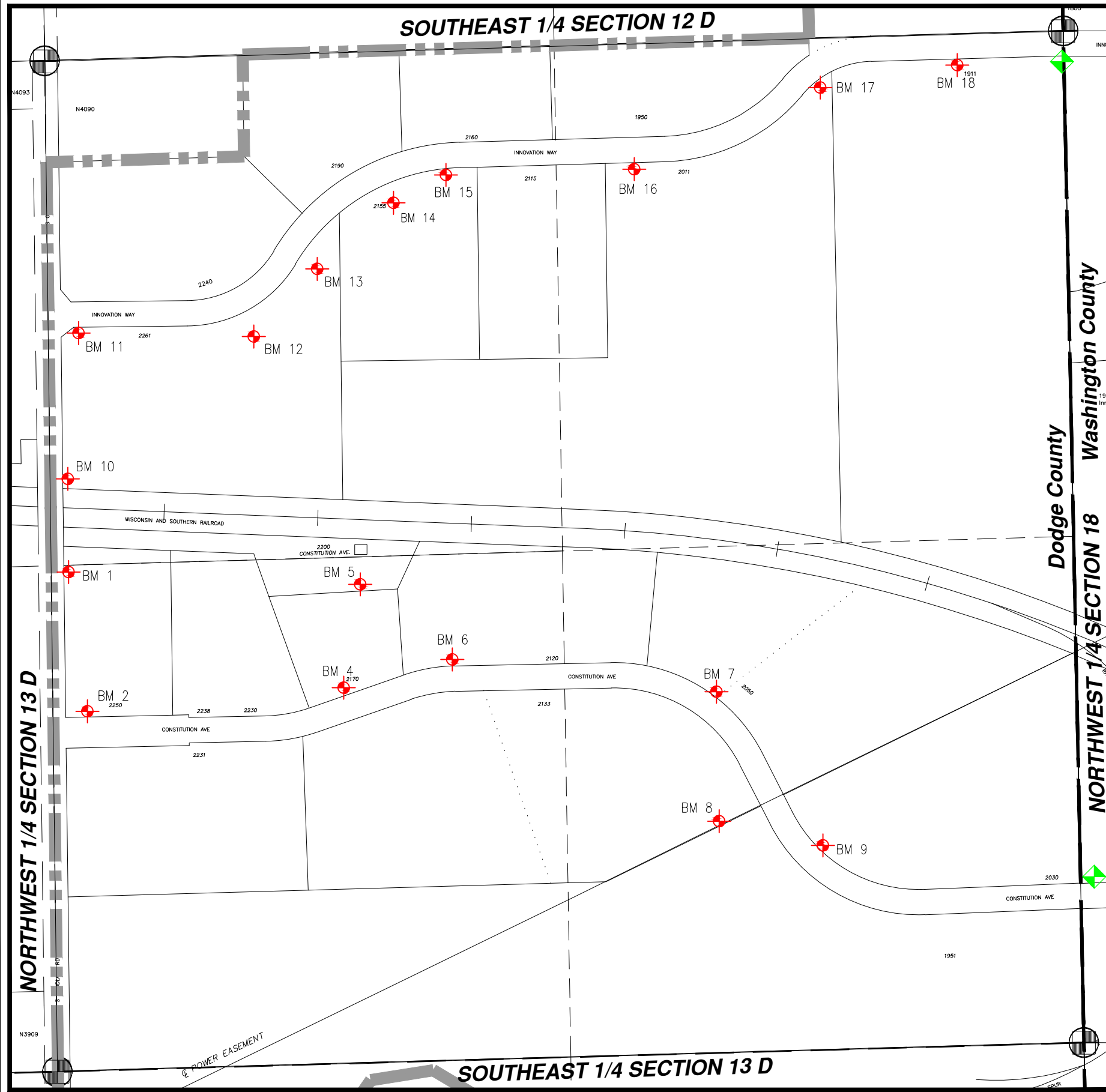




# DODGE COUNTY, T10 R17 NE 1/4 SECT 13

# NE 13D

= Hyd. With NO Benchmark Info.  
 = Existing Benchmark  
 = Benchmark in Adjacent Section  
 Users Should VERIFY all Benchmarks Information before use.



BM #	ELEV	DESCRIPTIONS
1	986.56	FIRE HYDRANT (NE BOLT W/TAG) EAST SIDE OF GOODLAND ROAD APPROX. 150' SOUTH OF RAILROAD TRACKS
2	996.92	FIRE HYDRANT (NW BOLT W/TAG) (NE) CORNER OF CONSTITUTION AVE. AND GOODLAND ROAD
4	988.59	FIRE HYDRANT (NW BOLT W/TAG) NORTH SIDE OF CONSTITUTION AVE. APPROX. 50' EAST OF SECOND DOUBLE SET OF CATCH BASINS, WEST OF POWER POLE #2320
5	990.06	FIRE HYDRANT (SW BOLT W/TAG) SOUTH OF WELL 15 APPROX. 100'
6	992.87	FIRE HYDRANT (NW BOLT W/TAG) 20' EAST OF POWER POLE #2318
7	991.53	FIRE HYDRANT (NW BOLT W/TAG) 50' NORTH OF POWER POLE #2314
8	995.15	RAILROAD SPIKE FOUND ON NORTH POWER POLE (#49-9119) OF DOUBLE POWER POLES FIRST DOUBLE SET OF POWER POLES WEST OF CONSTITUTION AVE. (SEE MAP FOR LOCATION)
9	987.94	FIRE HYDRANT (NW BOLT W/TAG) BETWEEN POWER POLES #2311 AND #2308
10	982.21	FIRE HYDRANT (SE BOLT @ POINTING ARROWHEAD) NORTH OF TRACKS APPROX. 50', EAST SIDE OF GOODLAND ROAD
11	984.84	FIRE HYDRANT (SW BOLT @ POINTING ARROWHEAD) ON SOUTH CORNER OF SOUTH GOODLAND AND INNOVATION WAY
12	998.81	FIRE HYDRANT (NE BOLT @ POINTING ARROWHEAD) SOUTH SIDE OF INNOVATION WAY, BETWEEN POWER POLES #95-2464 AND #95-2463
13	990.91	RAILROAD SPIKE IN POWER POLE #95-2459, 1' ABOVE THE GROUND ON NORTH SIDE OF POLE, SOUTH SIDE OF INNOVATION WAY
14	987.27	FIRE HYDRANT (NW BOLT @ POINTING ARROWHEAD) SOUTH SIDE OF INNOVATION BETWEEN POWER POLES #95-2459 AND #95-2457
15	976.75	FIRE HYDRANT (WEST BOLT @ POINTING ARROWHEAD) APPROX 20 EAST OF POWER POLE #95-2455
16	976.25	FIRE HYDRANT (WEST BOLT @ POINTING ARROWHEAD) BETWEEN POWER POLES #95-2455 AND #95-2454
17	975.12	FIRE HYDRANT (WEST BOLT @ POINTING ARROWHEAD) (NE) OF POWER POLE #95-2451
18	974.25	FIRE HYDRANT (SW BOLT @ POINTING ARROWHEAD) APPROX. 10' (NE) OF POWER POLE #95-2448, SOUTH SIDE OF INNOVATION WAY