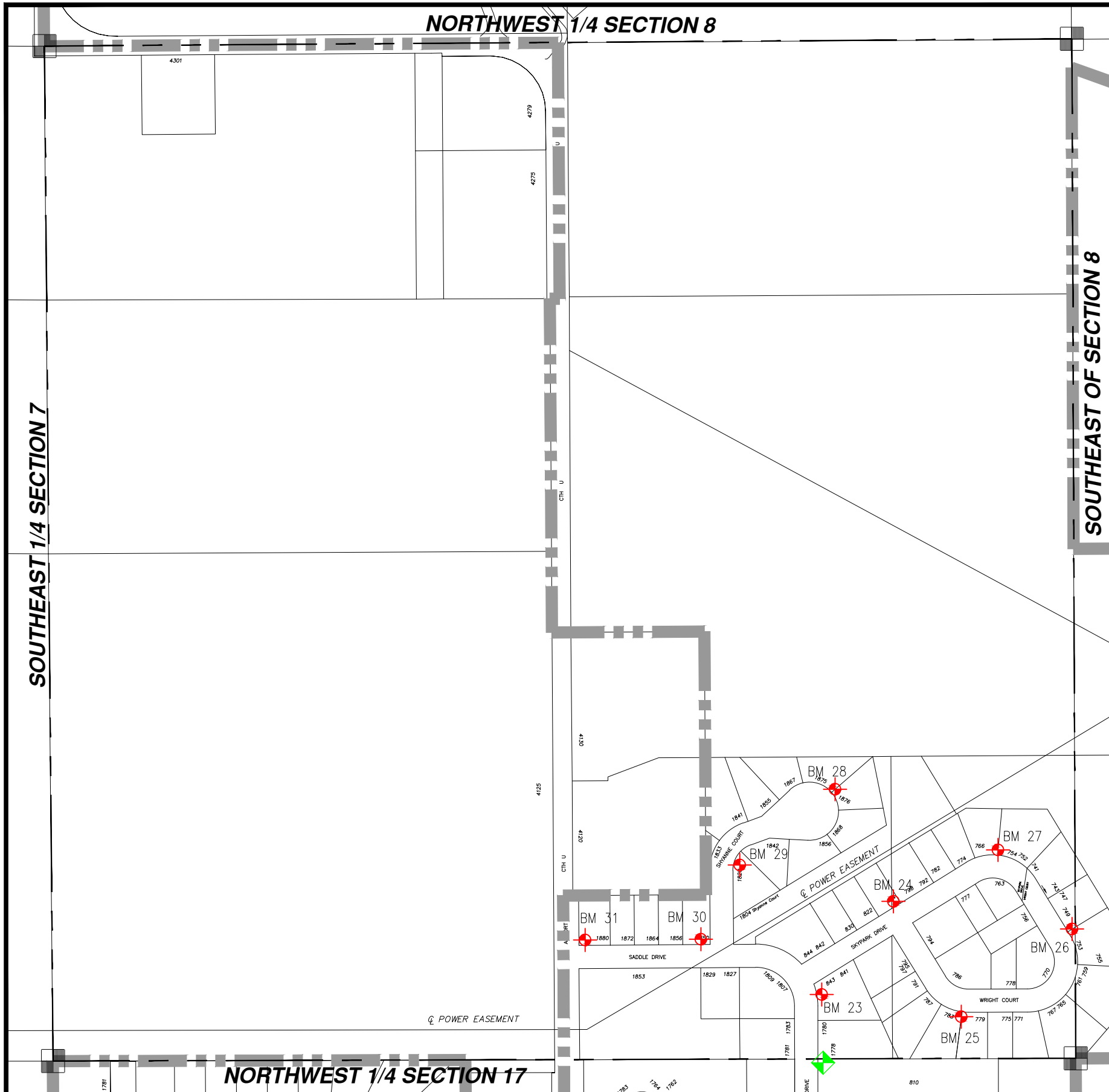




WASHINGTON COUNTY, T10 R18 SW 1/4 SECT 8

SW 8

= Hyd. With NO Benchmark Info.
 = Existing Benchmark
 = Benchmark in Adjacent Section
 Users Should VERIFY all Benchmarks Information before use.



BM #	ELEV	DESCRIPTIONS
23	1030.4	FH NE BOLT W/TAG, SE CORNER OF SADDLE DR AND SKYPARK DR AT #843
24	1032.66	FH NW BOLT W/TAG, N.SIDE OF SKYPARK DR. AT #818
25	1033.49	FH SE BOLT W/TAG, S. SIDE WRIGHT CT. AT #781
26	1031.87	FH NE BOLT W/TAG, AT #753 WRIGHT CT.
27	1033.46	FH NW BOLT W/TAG, N. SIDE OF SKYPARK DR AT #768
28	1031.27	FH NE BOLT W/TAG, EAST END OF SHYANNE CT. AT #1875
29	1032.26	FH SE BOLT W/TAG, S. SIDE OF SHYANNE CT. AT # 1820
30	1027.81	FH NE BOLT W/TAG, N. SIDE OF SADDLE DR. AT #1852
31	1026.58	FH NW BOLT W/TAG, NE COR. OF SADDLE DR. AND AIRPORT DR.(CTH "U")